



MEETING NOTES

Meeting	State of West Virginia Hazard Mitigation Plan (HMP) State Planning Team (SPT) Mitigation Strategy Meeting		
Date	February 9, 2023	Time	9:30 a.m. – 2:00 p.m.
Location	Kanawha County Public Library, 123 Capitol Street, Charleston, West Virginia		
Attendees	Ginger Barnett, Chief of Mitigation and Recovery, WV Emergency Management Division (WV EMD)		
	Tim Keaton, State National Flood Insurance Program (NFIP)/Cooperating Technical Partner (CTP) Coordinator, WV EMD		
	Xzavier Morgan, Project Officer, WV EMD		
	Amberlea Perks, WV EMD		
	Gabriel Reed, State Hazard Mitigation Officer, WV EMD		
	Stephanie Rosier, State Hazard Mitigation Planner, WV EMD		
	Tammy Sneed, Project Officer, WV EMD		
	Nuvia Villamizar, GIS Manager, WV EMD		
	Susan Pierce, Deputy State Historic Preservation Officer, WV Department of Arts, Culture and History, WV State Historic Preservation Office (remote)		
	Ryan Halsey, Community Development Block Grant (CDBG) Infrastructure Project Manager, WV Community Advancement and Development (remote)		
	Jennifer Skaggs, Interim Executive Director, WV Conservation Agency		
	Sherry Risk, CDBG Program Manager, WV Department of Economic Development (remote)		
	Jeremy Bandy, WV Department of Environmental Protection (WV DEP)		
	David Dove, Engineer, WV DEP – Dam Safety		
	Leo Medellin, Engineer, WV DEP - Dam Safety (Non-Coal) (remote)		
	Dennis Stottlemyer, Deputy Environmental Advocate, WV DEP (remote)		
	Aaron Tonkery, Program Manager, WV DEP Dam Safety (Non-Coal)		
	Anthony Evans, Deputy State Forester, WV Division of Forestry		
	Eric Hopkins, Lead GIS Specialist, WV GIS Technical Center (remote)		
	Julia Morton, Supervisor – Land and Streams, WV Department of Natural Resources (remote)		
	John Slater, WV Department of Natural Resources, Land and Streams (remote)		
	Robert Martin, Director, WV State Resiliency Office (SRO)		
	Ed Martin, Deputy Director, WV SRO		
	Jenny Gannaway, Executive Director, WV Voluntary Organizations Active in Disaster (VOAD) (remote)		
	Sandra Keener, Senior Case Manager, WV VOAD (remote)		
	Mark Lambert, Director, WVU Fire Service Ext/WV State Fire Training Academy (remote)		
Corey Brandon, Emergency Manager, Floodplain Manager, Deputy Dir. 911, Barbour County (remote)			
Shawn Wolford, Emergency Manager, Berkeley County Office of Emergency Management (OEM) (remote)			



MEETING NOTES

E. John Hoffman, Director, Braxton Emergency Services (remote)
Jeff Luck, Deputy Director, Brooke County Emergency Management Agency (EMA) (remote)
Andy Nickerson, Director, Brooke County EMA (remote)
Paula Brown, Deputy Director, Greenbrier County Homeland Security and Emergency Management (remote)
Paul Lewis, Hardy County OEM (remote)
Stephen Allen, Director, Jefferson County Office of Homeland Security and Emergency Management (remote)
David Armstrong, Deputy Director, Kanawha County Emergency Management
Direl Baker, Lincoln Office of Emergency Services (OES) (remote)
Ray Perry, Floodplain Administrator, Logan County
Steve Byus, Director, City of Madison Emergency Management (remote)
Robert Bowman, Deputy Director, McDowell County OEM (remote)
Keith Gunnoe, Director, Mercer County OEM (remote)
Harold W. Sperringer, Deputy Director, Monongalia County Emergency Management (remote)
Richard Miller, Director, Monroe County OEM (remote)
Steven T. Yoho, Director, Wetzel County Emergency Management/E-911 (remote)
Kim Odle, Executive Assistant, Region 1 Planning and Development Council (remote)
Marilyn Guerrero, Region 4 PDC (remote)
Mitch Lehman, Project Assistant, Region 4 PDC (remote)
Betsy Morris, Project Assistant, Region 4 PDC (remote)
Amanda Smarr, Project Assistant/GIS Coordinator, Region 4 PDC (remote)
Joel Davis, Project Administrator, Mid-Ohio Valley Regional Council (Region 5)
Sheena Hunt, Executive Director, Region 6 PDC (remote)
Carla Dent, Administrative Staff, Region 8 PDC (remote)
Craig Aaron Brown, Economic Development Specialist, Brooke Hancock Jefferson Metropolitan Planning Commission (remote)
Richard Begley, Faculty Emeritus Marshall University; Senior Project Manager, Alliance Consulting, Inc. (remote)
Meesh Zucker, Supervisory Community Planner, Federal Emergency Management Agency (FEMA) Region III (remote)
Tom Hansen, Grants Management Specialist, FEMA Region III
Jason Metzger, FEMA Region III
Elizabeth Ranson, Hazard Mitigation Grants Specialist, FEMA Region III
James Young, Disaster Field Coordinator, FEMA Region III
Marisa Gonzalez, Program Analyst, U.S. Department of Housing and Urban Development, Charleston Field Office (remote)



MEETING NOTES

JoAnn Combs, Economist/Silver Jackets Coordinator, U.S. Army Corps of Engineers (USACE)
Lisa Berger, WV Staff Liaison, International Code Council (remote)
Lou Vargo, Director, Wheeling-Ohio County Homeland Security and EMA (remote)
Christina Groves, Senior Community Resilience Planner, Tetra Tech (remote)
Tony Subbio, Project Manager, Tetra Tech
JaLeesa Tate, Deputy Project Manager, Tetra Tech

Discussion Points

This section summarizes each discussion point addressed during the SPT Mitigation Strategy Meeting.

Welcome and Introductions

Mr. Reed welcomed attendees to the meeting. Attendees introduced themselves. Mr. Subbio provided an orientation to the meeting materials.

Hazard Mitigation Planning – Refresher

Mr. Subbio provided a brief overview of hazard mitigation and hazard mitigation planning. Most attendees were familiar with the concepts.

Risk Assessment Review

- Ms. Tate reviewed the risk assessment process and results that were presented during the January 4, 2023 meeting. Ms. Tate explained hazards, exposure to hazards, and vulnerability from the impacts of hazards. She reviewed the 16 hazards of concern.
- Ms. Tate reviewed the concept of social vulnerability and the Centers for Disease Control and Prevention’s (CDC) Social Vulnerability Index. She stated that the index ratings range from 0.0 to 1.0, and that Tetra Tech used a threshold of 0.8 to define vulnerable areas.
- Ms. Tate reviewed areas exposed to the hazards of concern in more detail. She presented tables that showed the number of State facilities and State-identified Critical Facilities in the hazard areas. She explained what facilities were used in the analysis and how facilities were categorized.
- A few attendees requested that all critical facilities throughout the State be identified and mapped in the State HMP. Tetra Tech and the Steering Committee will discuss whether this is required with FEMA Region III.
- Participants stated that the number of facilities exposed to the landslide hazard seemed low. Mr. Subbio stated that Tetra Tech would review the analysis to ensure it is accurate.
- B. Martin asked why dam failure was not included in the exposure analysis. Mr. Subbio replied that the project team is still working to obtain dam inundation data, but at the time of the analysis, these data were not available. A meeting is being scheduled for the project team and dam safety subject matter experts to discuss the State’s dam safety program.



MEETING NOTES

Capabilities Assessment Review

- Mr. Subbio reviewed the results of the capabilities assessment that were discussed at the November 9, 2022 and January 18, 2023 SPT Meetings. Key issues include the following:
 - There is little regulation of development outside the special flood hazard area (SFHA).
 - The State Fire Code excludes one- and two-family residential structures.
 - Adopting and enforcing the State Building Code is optional for communities.
 - Paying for code enforcement at the local level is challenging.
 - State facilities are not required to meet local permitting requirements.
 - It is difficult to retain staff.
 - There are no dedicated funding mechanisms for mitigation at the State level.
 - There is a need for increased program coordination and integration among the State, Regional, and County mitigation programs.
- Mr. Reed requested that the HMP highlight capability shortfalls throughout West Virginia.

Goals and Objectives

- Mr. Subbio described goals and objectives in general and reviewed the draft set of goals and objectives for inclusion in the State HMP.
- Objective 1.5 will be updated to incorporate inventorying, continued maintenance, inspection, rehabilitation, and awareness activities related to high hazard potential dams.
- The wording of Objective 3.2 will be updated to require initial and ongoing education of local officials.
- The wording of Objective 3.3 will be updated to require initial and ongoing education of elected executive officials and to specifically reference dam failures.
- Goal 4 and its objectives will be updated to reflect enhancing programs to reduce vulnerability without negatively impacting community development. For example, acquisitions should be completed in a strategic manner so as not to disrupt or change the character of the local community.

FEMA Mitigation Action Types

Ms. Tate described the four types of mitigation actions defined by FEMA.

- Natural systems protection
- Education and awareness programs
- Plans and regulations
- Structure and infrastructure projects

Mitigation Action Development

- Mr. Subbio described development of mitigation actions.
 - Actions should be designed to meet the HMP's goals and objectives.
 - Some actions will be included in the HMP to reduce risk, whether by addressing vulnerable areas, vulnerable populations, or exposed State facilities. Actions should be



MEETING NOTES

developed to address common results of local risk assessments. The HMP must also include actions to address vulnerability to high hazard potential dams and to wildfire.

- Some actions will be included in the HMP to fill gaps in capabilities. This could include actions to develop and/or enhance plans and regulations, address staffing needs, or develop funding mechanisms to help implement mitigation efforts.
- Other actions will be developed to improve and integrate overall mitigation programs across the State.
- Mr. Subbio introduced attendees to the Action Worksheet form that they will complete to document their ideas for mitigation actions to include in the HMP. To facilitate data collection from remote participants, Tetra Tech developed an online survey form that collects the same information as the Action Worksheet that in-person attendees will complete.

Mitigation Action Brainstorming

Ms. Tate and Mr. Subbio led attendees through brainstorming actions to include in the HMP. Attendees identified potential actions in the following categories. In developing the actions below, attendees also held the following discussions:

- In a majority of communities, the only buildable land is within the floodplain; development in the floodplain cannot be prohibited. A participant suggested that development within the floodplain should have to be justified using a cost-benefit analysis or some other analysis.
- WV DEP oversees the watershed associations, and the Conservation Agency is involved in them.
- There is a WV Watershed Network that can be leveraged.
- WV DEP employs four basin coordinators to address watershed issues.
- Attendees discussed an action for the SPT to develop a list of all agencies to involve in the State's mitigation program and ensure their participation. This will be included in the Plan Maintenance section rather than as an action.
- Committees and focus groups described above would be designed to meet on a quarterly basis.
- The State will consider adding cyber attack as a hazard of concern analyzed in the HMP in the next HMP update.
- Excess management costs for Hazard Mitigation Assistance (HMA) programs could be used by the State to fund local-level mitigation programs and regional technical assistance.
- The Governor recently published two websites that provide resources for resilience, mitigation, and infrastructure efforts.
 - [Grants.wv.gov](https://grants.wv.gov)
 - WV Infrastructure Hub

Reducing Vulnerability of State Facilities

- Develop a long-term State Real Estate Plan to eventually ensure that all State buildings comply with development regulations. This could include retrofitting existing structures, building new facilities, or finding new space for lease in buildings that comply with regulations. The plan will prioritize buildings that WV EMD deems critical facilities. Participants noted that requiring State facilities to comply with permitting regulations must be phased and achievable. For some existing spaces, it would be easier to build a new building than to retrofit an existing building.



MEETING NOTES

The State should focus on critical infrastructure and require that those facilities be moved out of hazardous areas or built to code.

- In the short term, update the State Code to state that State facilities “should” go through the local permitting process. There is currently a bill going through the State Senate to make this change. It would be a first step toward eventually requiring State facilities to comply with local permitting requirements.
- Ensure at least 50 percent compliance of State-owned critical facilities to local floodplain management regulations in the next five years.

Improving Code Enforcement

- Explore making or allowing code enforcement to be a county or regional function to leverage economies of scale.
- Develop a State-level funding mechanism for local code enforcement efforts.
- Add relevant eligibility requirements to existing State funding programs or the State requirements for other funding programs administered by the State. For example, WV DEP’s new demolition program requires the community to have adopted the State Building Code to be eligible for funding.

Educating State Legislators and Local Officials

- Conduct an annual education program for State Legislators on hazards and mitigation, perhaps during Flood Resiliency Week.
- Educate legislators of the cost of locating State facilities in identified hazards areas and the benefits of locating facilities outside those areas.
- Conduct annual Flood Resiliency Awareness Week events at the State Capitol.
- Educate local elected and appointed officials on hazards, vulnerability, and mitigation, including related to dam failure.
- Conduct a one-day meeting to describe all available funding opportunities that can be leveraged to reduce long-term vulnerability.
- Develop and regularly conduct an abridged (less than one day long) floodplain management training session for local officials.
- Conduct FEMA-supported training workshops on a regional basis.
- Require documented continuing education of local officials for the community to be eligible for grant funding. For instance, communities are not eligible for FEMA’s HMA funding if their floodplain administrators are not current on their continuing education.

Program Improvement and Integration

- Develop and annually review State-level requirements for local mitigation plans and programs, including the following:
 - Require regional/county HMPs to meet the high hazard potential dams (HHPD) mitigation planning requirements.
 - Develop a standardized dam reporting template.
 - WV EMD will complete templates for flooding, landslide, and dam failure hazards.



MEETING NOTES

- Document involvement of municipal floodplain administrators in the plan development process.
- Continue and enhance integration of the WV EMD Mitigation program with the SRO.
- Integrate WV EMD's preparedness programs (e.g., Threat/Hazard Identification and Risk Assessment [THIRA], Emergency Operations Plan [EOP], Training and Exercise Plan [TEP]) with the Mitigation program, SRO, and Flood Protection Plan.
- Integrate the Infrastructure Investment and Jobs Act (IIJA) Board and projects with the WV EMD Mitigation program and SRO.
- Add WV EMD and the SRO officials to the IIJA Board.
- Demonstrate the need to invest time and coordination with established agency partners to build the State's mitigation program. Ideally, this would include getting representatives of all State offices into one room to discuss their programs and how they can integrate.
- Create and maintain a Mitigation Partner Focus Group or similar body.
- Expand coordination of the WV DEP's coal and non-coal dam safety programs, WV EMD, the USACE, local conservation districts, the Natural Resources Conservation Service (NRCS), WV Fish and Wildlife, WV DNR, and local watershed groups regarding decreasing vulnerability due to dam failures.
- Expand coordination of building code officials, the County Commissioners Association, the WV Municipal League, the Homebuilders Association, and the Realtors Association regarding reducing vulnerability.
- Establish a cadre of interdepartmental educators who would inform other departments about their capabilities and programs.
- Grow the WV Silver Jackets membership, program, and projects.

Educating the Public

- Enact a real estate disclosure law to require potential property buyers be informed of a property's history of flooding and other hazard impacts.
- Develop template marketing materials and programs for mitigation topics.
- Increase education of the public on the risk from wildfires and how to prevent them.
- Develop an online tool similar to the TEIf and TEAL for wildfire occurrences and risk.
- Conduct outreach by WV DEP to dam owners about the availability of funding through FEMA's Rehabilitation of HHPD Grant Program and work with dam owners to secure funding to protect dams and reduce the threat that the dams pose to downstream communities.

Providing Technical Assistance to Local Jurisdictions

- WV EMD will provide more technical assistance to local communities on their mitigation projects.
- WV EMD should hire at least one engineer who could provide project design and other services to local communities.

Leveraging and Enhancing the Capabilities of the PDCs as Hazard Mitigation Partners

- Fund and increase coordination and regional activities at the PDCs.



MEETING NOTES

- Leverage the PDCs to conduct outreach on mitigation topics throughout the regions, including in-person local outreach efforts.
- Develop a funding stream for the PDCs to provide mitigation planning and technical assistance to local jurisdictions.
- Conduct train-the-trainer sessions for PDC staff so that they can provide local training and education and develop a funding mechanism to do so.
- Provide additional funding to PDCs to support their local mitigation objectives.

Improving Emergency Preparedness and Response

- Require dam failure Emergency Action Plans (EAP) to assess roadway inundation in evacuation planning.
- Modernize the WV Forestry Service's firefighting capability.

Next Steps and Questions

Mr. Subbio reviewed the following next steps in the HMP update process with attendees:

- Tetra Tech and the Steering Committee will discuss with FEMA Region III whether vulnerability and exposure tables need to list each county.
- WV EMD, WV DEP, and Tetra Tech will conduct a meeting to discuss dam safety.
- Tetra Tech will update the draft goals and objectives based on discussions held during the meeting.
- Attendees will identify additional mitigation actions and submit them to Mr. Reed by February 24, 2023.
- Tetra Tech will complete sections of the HMP and post them to the project website.
- Mr. Reed will notify stakeholders when the draft HMP is complete and ready for review.
- The Steering Committee will schedule the Plan Draft Review Meeting for mid-April 2023.

With no further questions, Mr. Reed and Mr. Subbio thanked attendees for their time and participation.

The meeting adjourned at 2:00 p.m.

Tt TETRA TECH
complex world | CLEAR SOLUTIONS™

State of West Virginia 2023 Hazard Mitigation Plan Update

State Planning Team
 Mitigation Strategy Meeting
 February 9, 2023

1

Welcome!

complex world | CLEAR SOLUTIONS™

2

Agenda

- Hazard Mitigation Planning - Refresher
- Risk Assessment Review
- Capabilities Assessment Review
- Goals and Objectives
- FEMA Mitigation Action Types
- Mitigation Action Development
- Mitigation Action Brainstorming
- Next Steps and Questions

complex world | CLEAR SOLUTIONS™

3

Tt TETRA TECH

Hazard Mitigation Planning - Refresher

complex world | CLEAR SOLUTIONS™

4

What is hazard mitigation?

Any sustained action taken to reduce or eliminate long-term risk to life and property from a hazard event.

"...provides the blueprint for reducing the potential losses identified in the risk assessment, based on existing authorities, policies, programs, and resources, and local ability..." (Code of Federal Regulations).

complex world | CLEAR SOLUTIONS™

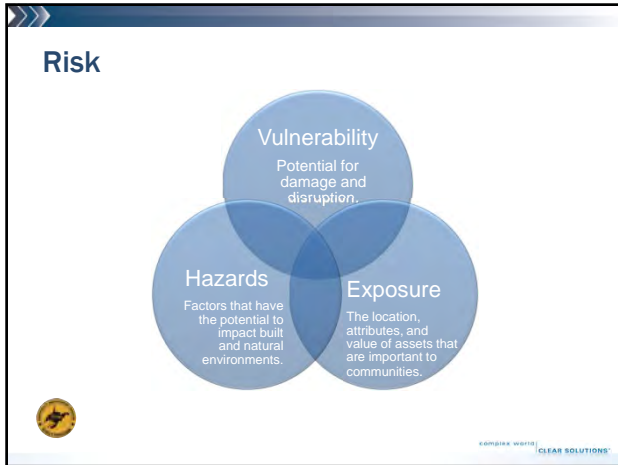
5

Tt TETRA TECH

Risk Assessment Review

complex world | CLEAR SOLUTIONS™

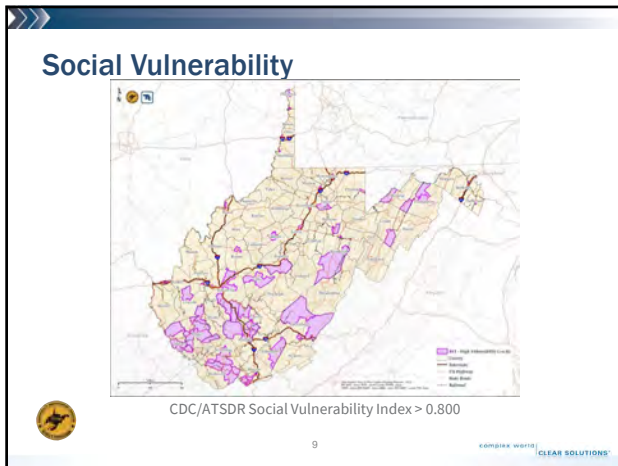
6



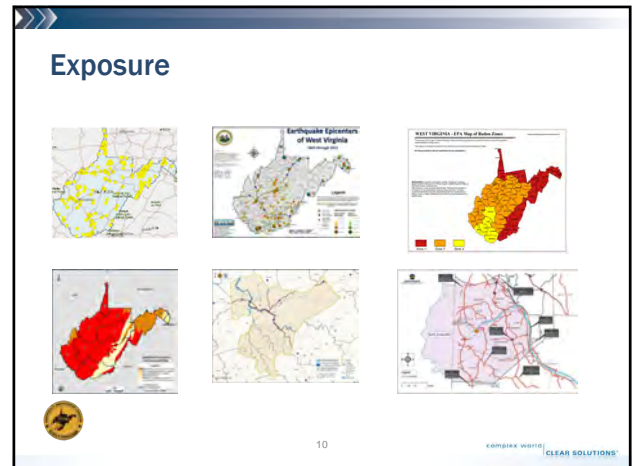
7

- ## Hazards
- Dam Failure
 - Drought
 - Earthquake
 - Extreme Temperature
 - Flood
 - Hazardous Materials
 - Landslide
 - Levee Failure
 - Pandemic
 - Radiological Incident
 - Radon Exposure
 - Severe Storms
 - Subsidence
 - Utility Failure
 - Wildfire
 - Winter Weather

8



9



10

Exposure

➤ Exposure

Hazard	State Facilities			Hazard	Critical Facilities		
	Owned	Unknown	Leased		Owned	Unknown	Leased
1% Flood	48	27	21	1% Flood	3	2	4
0.2% Flood	114	47	77	0.2% Flood	23	9	24
Levee Failure	27	12	14	Levee Failure	6	2	2
Wildfire	313	103	145	Wildfire	37	20	22
Subsidence	51	18	35	Subsidence	5	3	1
Rad. Incidents	2	1	0	Rad. Incidents	0	0	0
Landslide	1	0	1	Landslide	0	0	0
Hazmat	538	184	269	Hazmat	86	41	48


11

Capabilities Assessment Review

12

Capabilities Assessment Review

- Little regulation of development outside the special flood hazard area (SFHA)
- Fire Code and residential exclusion
- State Building Code and its optional nature
- Paying for code enforcement



13

COMBIX WORLD CLEAR SOLUTIONS

13

Capabilities Assessment Review

- State facilities and permitting requirements
- Staff capabilities
- Funding mechanisms
- Program coordination and integration



14

COMBIX WORLD CLEAR SOLUTIONS

14



Goals and Objectives




15

15

Goals

- Broad
- Reflect long-term policy
- Vision
- What we want to **ACHIEVE**




16

COMBIX WORLD CLEAR SOLUTIONS

16

Objectives

- More specific than goals
- Address individual problems
- Not technically required, but help focus development and implementation




17


COMBIX WORLD CLEAR SOLUTIONS

17

2023 WV HMP Goals and Objectives



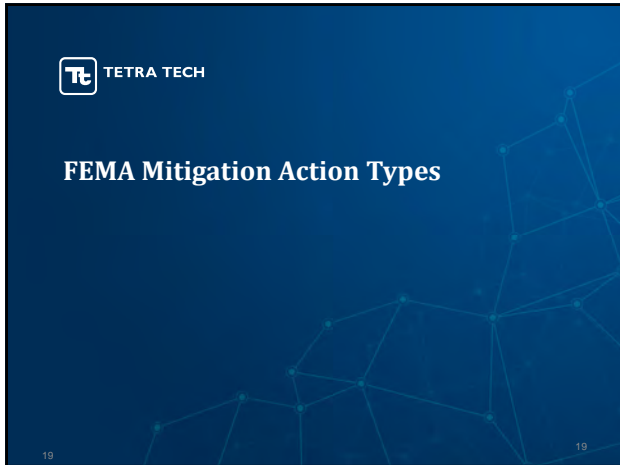
Handout



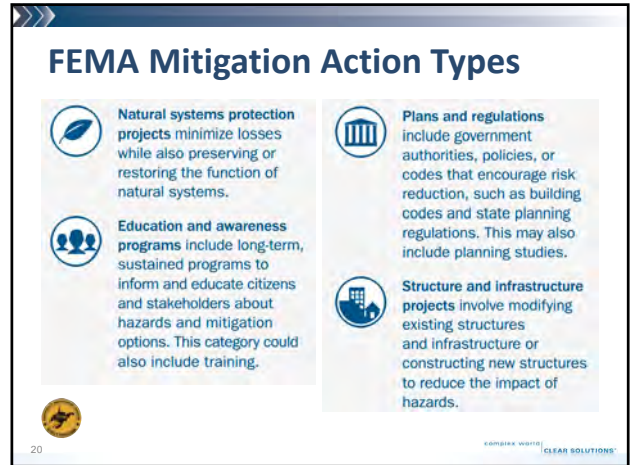
18

COMBIX WORLD CLEAR SOLUTIONS

18



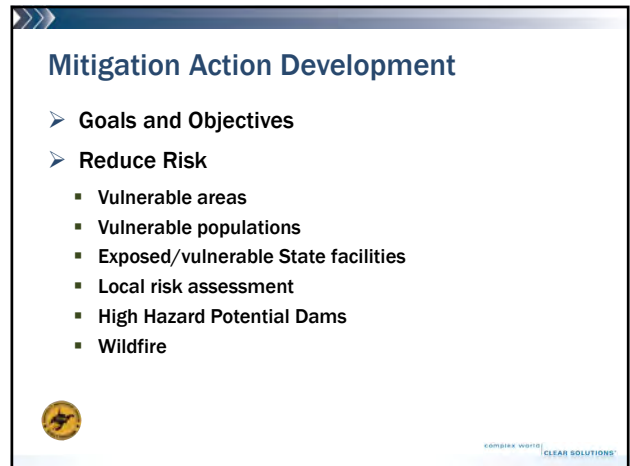
19



20



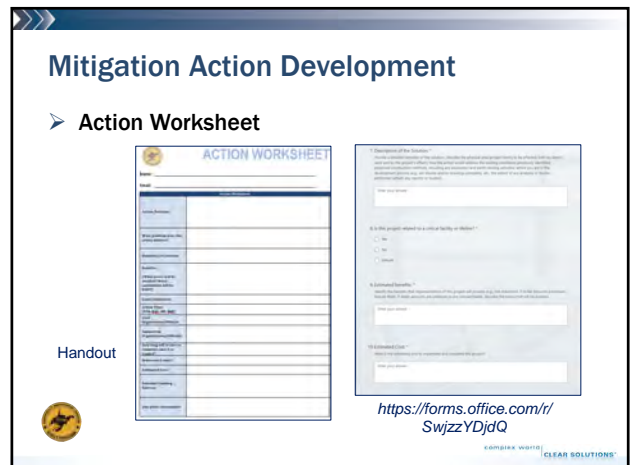
21



22



23



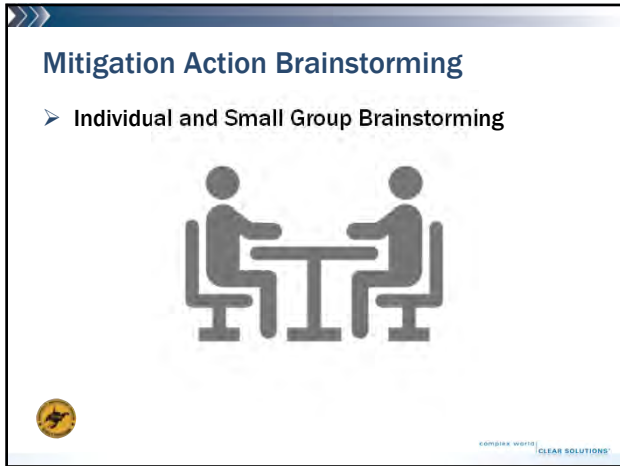
24



25



26



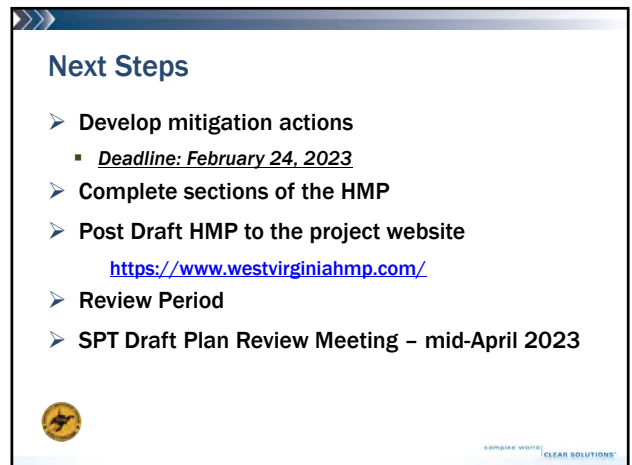
27



28



29



30

Questions?

Thank you for your time!



COMBIX WATER | CLEAR SOLUTIONS

31

Contacts



Gabriel Reed
gabriel.a.reed@wv.gov
(304) 414-7673



Tony Subbio
tony.subbio@tetrattech.com
(717) 839-5654



COMBIX WATER | CLEAR SOLUTIONS

32



AGENDA

STATE OF WEST VIRGINIA 2023 HAZARD MITIGATION PLAN UPDATE State Planning Team Mitigation Strategy Meeting

February 9, 2023 | 9:30 a.m. – 2:00 p.m.

1. Welcome and Introductions	9:30 – 9:45
2. Hazard Mitigation Planning – Refresher	9:45 – 10:00
3. Risk Assessment Review	10:00 – 10:15
a. Risk	
b. Hazards	
c. Social Vulnerability	
d. Exposure	
4. Capabilities Assessment Review	10:15 – 10:35
5. Goals and Objectives	10:35 – 11:00
a. Goals	
b. Objectives	
c. 2023 WV HMP Goals and Objectives	
6. Break	11:00 – 11:15
7. FEMA Mitigation Action Types	11:15 – 11:30
8. Mitigation Action Development	11:30 – 11:50
a. Goals and Objectives	
b. Reduce Risk	
c. Fill Gaps in Capabilities	
d. Improving Statewide Mitigation Programs	
e. Action Worksheet	
9. Mitigation Action Brainstorming	11:50 – 1:40
a. Large Group Brainstorming	(including working
b. Individual and Small Group Brainstorming	lunch)
c. Report Back	
10. Next Steps and Questions	1:40 – 2:00





West Virginia State Hazard Mitigation Plan

State Facilities' Exposure to Hazards

Department/ Agency	Facility	Address	City	Owned vs. Leased	1% Flood	0.2% Flood	Levee Failure	Wildfire	Subsidence	Rad. Incidents	Landslide	Hazmat
Adjutant General's Office	BECKLEY CAPITAL	222 MAIN STREET	BECKLEY	Leased								X
Adjutant General's Office	GREENBRIER CAP HQ	219 N BREENBRIER V. AIRP	LEWISBURG	Owned								
Adjutant General's Office	MORGANTOWN CAP HQ	225 HART FIELD ROAD	MORGANTOWN	Owned				X				X
Administration	BLDG 11 - CHILLER	218 CALIF AVE BLDG 11	CHARLESTON	Owned								X
Administration	BLDG 32 - HUNTINGTON	2699 COMMERCE PARK	HUNTINGTON	Owned			Y					X
Administration	BLDG 36 - ONE DAVIS	321 CAPITAL STREET	CHARLESTON	Owned		X						X
Administration	BLDG 37- DEP /PEIA	610 57TH STREET	CHARLESTON	Owned				X				X
Administration	BLDG 5	1900 WASHINGTON ST.	CHARLESTON	Owned		X						X
Administration	BLDG 5 TENTH FLOOR	BLDG 5 CAPITOL COMPLEX	CHARLESTON	Leased		X						X
Administration	BLDG 6 DATA CENTER	BLDG 6, Capitol COMPLEX	CHARLESTON	Leased		X						X
Administration	BLDG 74	318-324 FOURTH AVENUE	SO CHARLESTON	Owned		X		X				X
Administration	BLDG 98 -GROUNDS LOT	321 MICHIGAN AVENUE	CHARLESTON	Owned		X						X
Administration	BRAXTON CO DEVELOP	89 RICHARD D. MINNICH DR	SUTTON	Leased				X				X
Administration	BUILDING 16-DAY CARE	2100 WASHINGTON ST.	CHARLESTON	Owned		X						X
Administration	BUILDING 3 - DMV	1800 WASHINGTON ST.	CHARLESTON	Owned		X						X
Administration	BULLITT STREET LLC	908 BULLITT STREET	CHARLESTON	Leased		X						X
Administration	CENTRAL MAIL BLDG	311 JEFFERSON ST	CHARLESTON	Leased		X						X
Administration	CENTRAL PURCHASING DIVISION	2019 WASHINGTON ST E	CHARLESTON	Owned		X						X
Administration	Consolidated Public Retirement Board	4101 MACCORKLE AVENUE	CHARLESTON	Owned								X
Administration	FINANCE DIVISION	2101 WASHINGTON ST. EAST	CHARLESTON	Leased		X		X				X
Administration	GENERAL SERVICES DIVISION	112 CALIFORNIA AVE. BLDG 4	CHARLESTON	Owned		X						X
Administration	Office	1824 Murdoch Ave	PARKERSBURG	Owned								X
Administration	OFFICE CONTENTS	103 MICHIGAN AVE	CHARLESTON	Owned		X		X				X
Administration	PIEDMONT ST WAREHOUS	915 PIEDMONT STREET	CHARLESTON	Leased								X
Administration	WAREHOUSE	2700 CHARLES AVENUE	DUNBAR	Owned	X	X						X
Administration	Ethics Commission	210 BROOKS STREET	CHARLESTON	Owned		X		X				X
Agriculture	DAIRY BARN #F103	107 S. EISENHOWER DR	BECKLEY	Owned				X				X
Agriculture	DARBY FARM	200 WEESE ST	ELKINS	Owned				X				
Agriculture	DF JACKSON CO WHSE	1 CEDAR LAKE RD	RIPLEY	Owned				X				X
Agriculture	FARMERS MARKET	2409 GIHON ROAD	PARKERSBURG	Owned								X
Agriculture	LAKIN OFFICE TRAILER	9 PLANT DRIVE RD	LAKIN	Owned								X
Agriculture	LEASE AGRO46N12	3453 UNIVERSITY AVE	MORGANTOWN	Leased				X				X
Agriculture	LEASE AGRO48N12	322 SUMMERS ST	HINTON	Leased				X				X
Agriculture	LEASE AGRO49216	221 MAPLE AVE	OAK HILL	Leased								X
Agriculture	LEASE AGRO50314	820 CHELSEA ST.	SISTERSVILLE	Leased		X						X
Agriculture	LEASE AGRO51616	1412 BLIZZARD DRIVE	PARKERSBURG	Leased				X				X



Department/ Agency	Facility	Address	City	Owned vs. Leased	1% Flood	0.2% Flood	Levee Failure	Wildfire	Subsidence	Rad. Incidents	Landslide	Hazmat
Agriculture	MOOREFIELD AGR. CENT	60 MOOREFIELD INDUSTRIAL PARK ROAD	MOOREFIELD	Owned								X
Air and Environmental Quality Boards	Public Employees Insurance Agency	601 57TH ST. SE	CHARLESTON	Leased		X						X
Alcohol Beverage Control Administration	ABCA WAREHOUSE	97 INDEPENDENT AVE	NITRO	Leased		X						X
Architects	Daniel Boone Hotel	405 CAPITOL STREET	CHARLESTON	Leased		X						X
Armory Board	1/150TH ARS and HHT 1/150TH and D1 CO D FSC 230TH	2915 Old Bramwell Road	BLUEFIELD	Unknown				X				X
Armory Board	BSB 130th AW	1679 Coonskin Drive	Charleston	Unknown				X				
Armory Board	156th MP DET	150 Armory Drive	Monaville	Unknown	X	X		X				X
Armory Board	167th AW	222 Saber Jet Blvd	MARTINSBURG	Unknown					X			X
Armory Board	249th Band	1705 Mileground Drive	Morgantown	Unknown								X
Armory Board	35th CST and JITEC	610 Dames Street	St Albans	Unknown				X				X
Armory Board	772nd TRP and Co C, 2/104 MEDEVAC and Det 3 D 2/104 AVN and D Co RSP	285 Aviation Drive	Williamstown	Unknown				X				X
Armory Board	77th BDE Troop Command and 863RD MP CO and TRP C 1/150TH and CO D FSC 230TH BSB and D4 CO D FSC 230TH and B Co RSP BSB	409 WOOD MOUNTAIN ROAD	GLEN JEAN	Owned				X				X
Armory Board	AASF/PUMP HOUSE (SMA	100 AVIATION DRIVE	WILLIAMSTOWN	Owned				X				X
Armory Board	BLUEFIELD MAINT SHOP	BLUEWELL RURAL STATION	BLUEFIELD	Owned								X
Armory Board	BTRY A 1/201ST and D2 1/201ST FSC	201 CAISSON DRIVE	ELKINS	Owned				X				X
Armory Board	BTRY B 1/201ST and D3 1/201ST FSC	99 EVERLASTING LANE	MORGANTOWN	Owned								
Armory Board	BTRY C 1/201ST and D5 1/201ST FSC	635 Industrial Park Road	Maxwelton	Unknown				X	X			X
Armory Board	BUCKHANNON READINES and 601st EN CO and 229th Eng Det	1 ARMORY ROAD	BUCKHANNON	Owned								X
Armory Board	C Co RSP	240 Army Road	Kingwood	Unknown	X	X		X				X
Armory Board	CAMP DAWSON/1/201ST FSC and C CO 2/19TH and Det 1 115th EN CO and 753rd EOD	1001 ARMY ROAD	KINGWOOD	Owned	X	X						X
Armory Board	Camp Galilee	409 Camp Calilee Road	TERRA ALTA	Owned								
Armory Board	CHARLESTON ARMORY/WV NATIONAL GUARD	1701 COONSKIN DR.	CHARLESTON	Owned								
Armory Board	CHP TENSION FABRIC	100 ARMY NAVY DRIVE	ELEANOR	Owned		X						X
Armory Board	CLARKSBURG ARMORY and 115th EN CO	5 ARMORY ROAD	CLARKSBURG	Owned	X	X		X				X
Armory Board	Co C, 1/150 AVN(Aslt) and Det 2 D 1/150 AVN and Det 1 131st AV TM	538 Girty's Point Road	Wheeling	Unknown				X				
Armory Board	D1 157TH MP CO	79 Robert C Byrd Industrial Park	MOOREFIELD	Unknown								X
Armory Board	D1 BTRY B 1/201ST and D4 1/201ST FSC	400 Kelley Drive	Keyser	Unknown				X				X
Armory Board	DUNBAR STORAGE BLDG and 771st Trp CMD and 153rd PAD	605 26TH STREET	DUNBAR	Owned				X				X
Armory Board	ELEANOR CSMS	110 ARMY NAVY DR	RED HOUSE	Owned	X	X						X
Armory Board	FAIRMONT AFRC	8000 THE DRIVE	FAIRMONT	Owned				X				X



Department/ Agency	Facility	Address	City	Owned vs. Leased	1% Flood	0.2% Flood	Levee Failure	Wildfire	Subsidence	Rad. Incidents	Landslide	Hazmat
Armory Board	FSC 1092nd and 1257th Trans Co	4194 Ohio River Road	PT. PLEASANT	Unknown	X	X	Y	X				X
Armory Board	FWATTS	1000 Fixed Wing Drive	Bridgeport	Unknown								X
Armory Board	FWATTS FLAM ST	1000 FIXWING DR	BRIDGEPORT	Owned		X		X				X
Armory Board	GASSAWAY ARMORY	1072 STATE STREET	GASSAWAY	Owned				X				X
Armory Board	HQB 1/201ST FA and 1/201ST FA BN and D1 1/201ST FSC and 620th SC Co	201 Artillery Drive	Fairmont	Unknown				X				X
Armory Board	HILL ST GARAGE	2600 HILL ST.	BLUEFIELD	Owned				X				X
Armory Board	HQS 197th RGMNT-RTI and WVARNG Training CTR and ARNG SPECIAL OP DET	1001 Armory Road	Kingwood	Unknown				X				X
Armory Board	EUR (SODE)											
Armory Board	HSC 1092nd and 193dr EN PLT and Det 1 119th	1500 BLIZZARD DR	PARKERSBURG	Owned				X				X
Armory Board	JACKSON CO AFRC and Det 1 821st EN CO	8832 PT. PLEASANT ROAD	MILLWOOD	Owned								X
Armory Board	JACKSON CTY HOUSE	3050 POINT PLEASANT RAOD	MILLWOOD	Owned								X
Armory Board	JOINT FORCES HEADQUARTERS and WV Recruiting and DET 1 1809 JA TM and DET 2 30th ARM BDE	1703 Coonskin Drive	Charleston	Unknown								
Armory Board	CMB											
Armory Board	Retention											
Armory Board	KENOVA FMS#7	2192 BOOTH DRIVE	KENOVA	Owned				X				X
Armory Board	LEWISBURG Army Reserve Center	748 N Jefferson Street	Lewisburg	Owned				X	X			X
Armory Board	LEWISBURG FUEL PUMPS	659 INDUSTRIAL PARK RD	MAXWETON	Owned				X	X			X
Armory Board	LOGAN MINGO READINES	22 MINE ROAD	HOLDEN	Owned								X
Armory Board	MARSHALL CO ARMORY	1600 LAFAYETTE AVE	MOUNDSVILLE	Owned								X
Armory Board	MARTINSBURG AIRPORT	1315 AIRPORT ROAD	MARTINSBURG	Owned								
Armory Board	MARTINSBURG ARMORY	2096 KELLY ISLAND ROAD	MARTINSBURG	Owned					X			
Armory Board	MOOREFIELD AFRC	157 FREEDOM WAY	MOOREFIELD	Owned				X				X
Armory Board	MOUNDSVILLE ARMORY and 119th Sapper Co	1501 9TH STREET	MOUNDSVILLE	Owned				X				X
Armory Board	POINT PLEASANT ARMORY STORAGE	8832 Point Pleasant Road	Milwood	Owned								X
Armory Board	ROCK BRANCH WAREHOUS	160 JACOBSON DR.	POCA	Owned		X		X				X
Armory Board	ST. ALBANS ARMORY	610 DAME STREET	ST. ALBANS	Owned				X				X
Armory Board	STORAGE BUILDING 2	40 ARMORY ROAD	WESTON	Owned				X				X
Armory Board	SUMMERSVILLE FUEL SU and 821st EN CO	3 ARMORY WAY	SUMMERSVILLE	Owned								X
Armory Board	TRP A 1/150TH and D2 CO D FSC 230TH	1603 Armory Drive	WILLIAMSON	Unknown			Y	X				X
Armory Board	BSB											
Armory Board	TRP B 1/150TH and D3 CO D FSC 230TH and 111th Engineer Brigade and 3664th Maint Co and CERFP and A Co RSP	111 Army Navy Drive	Red House	Unknown	X	X						X
Armory Board	BSB											



Department/ Agency	Facility	Address	City	Owned vs. Leased	1% Flood	0.2% Flood	Levee Failure	Wildfire	Subsidence	Rad. Incidents	Landslide	Hazmat
Armory Board	US Army Headquarters	25 Armory Drive	WHEELING	Owned				X				X
Armory Board	US Army Headquarters	25 Armory Drive	WHEELING	Owned				X				X
Armory Board	USPFO ADMIN BLDG and 1935th AQ Team and	50 ARMORY RD	BUCKHANNON	Owned				X				X
Armory Board	WILLIAMSTOWN AFRC	101 AVIATION DR	WILLIAMSTOWN	Owned				X				X
Armory Board	WV ARMY NATIONAL GUARD RECRUITING OFFICE and 2/19TH SFG(A) and AUG 2/19 AUG TDA	2194 BOOTH DRIVE	KENOVA	Owned								X
Armory Board	WV ARNG MEDICAL COMMAND	100 Military Drive	Charleston	Unknown				X				X
Armory Board	WVNG EMIVEST HANGER	731 NOVAK DR.	MARTINSBURG	Owned								
Attorney General	EP OFFICE	269 AIKENS CENTER	MARTINSBURG	Leased					X			X
Aviation	AVIATION HANGAR	502 EAGLE MOUNTAIN ROAD	CHARLESTON	Owned				X				X
Bar	WV STATE BAR	2000 DEITRICK BOULEVARD	CHARLESTON	Owned				X				X
Barbers and Cosmetologists Board	WVBBC	1201 DUNBAR AVENUE	DUNBAR	Owned		X						X
Blue Ridge Community and Technical College	BERKELEY BUS PARK	5550 WINCHESTER AVE	MARTINSBURG	Leased					X			X
Blue Ridge Community and Technical College	HQ STORAGE BUILDING	13650 APPLE HARVEST DR	MARTINSBURG	Owned				X	X			X
Blue Ridge Community and Technical College	PINES OPPORTUNITY CE	109 WAR MEMORIAL DRIVE	BERKELEY SPRINGS	Leased								X
Blue Ridge Community and Technical College	VALLEY STORAGE	78 DELIA WAY	MARTINSBURG	Leased					X			X
Bluefield State College	COTTAGE F	219 Rock St	BLUEFIELD	Owned								X
Board of Dentistry	OFFICE	1319 ROBERT C. BYRD DR	CRAB ORCHARD	Leased	X	X						X
Board of Examiners in Counseling	MORRISON BUILDING	815 QUARRIER STREET #212	CHARLESTON	Leased		X						X
Board of Landscape Architects	PEOPLES BUILDING	179 SUMMERS ST	CHARLESTON	Leased		X						X
Board of Licensed Dietitians	HILLCREST OFFICEPARK	104 DEE DRIVE	CHARLESTON	Owned				X				X
Board of Occupational Therapy	CAMPUS VIEW PROF BDG	1063 MAPLE DRIVE	MORGANTOWN	Leased				X				X
Board of Pharmacy	OFFICE	2310 KANAWHA BLVD. E	CHARLESTON	Leased				X				X
Board of Physical Therapy	OFFICE	2 PLAYERS CLUB DR	CHARLESTON	Leased				X				X
Board of Practical Nurses	OFFICE	101 DEE DRIVE STE 100	CHARLESTON	Leased				X				X
Board of Psychologists Examiners	CHARLESTON	1205 QUARRIER STREET	CHARLESTON	Leased		X						X
Board of Registered Nurses	SKAFF FAMILY LIMITED	5001 MACCORKLE AVENUE SW	SOUTH CHARLESTON	Leased		X						X
Board of Respiratory Care	OFFICE	106 DEE DRIVE STE. #1	CHARLESTON	Leased				X				X
Board of Treasury Investments	BTI OFFICES	315 70TH STREET SE	CHARLESTON	Leased		X						X
Board of Veterinary Medicine	OFFICE	5509 BIG TYLER RD	CROSS LANES	Leased				X				X
Bridgevalley Community and Technical College	BRIDGE VALLEY	619 2ND AVENUE	MONTGOMERY	Owned		X		X				X
Bridgevalley Community and Technical College	BUILDING 2000	2001 UNION CARBIDE DR	SOUTH CHARLESTON	Leased								X
Cedar Lakes Conference Center	CONFERENCE CENTER	82 FFA DR.	RIPLEY	Owned								X
Chiropractic Examiners Board	FOOT DOCTOR RENTAL	415 1/2 D STREET B	SOUTH CHARLESTON	Leased		X		X				X



Department/ Agency	Facility	Address	City	Owned vs. Leased	1% Flood	0.2% Flood	Levee Failure	Wildfire	Subsidence	Rad. Incidents	Landslide	Hazmat
Commission for National and Community Service	OFFICE	600 CAPITOL STREET	CHARLESTON	Leased		X		X				X
Concord University	CONCORD UNIVERSITY	1000 VERMILLION STREET	ATHENS	Owned				X				X
Conservation Agency	CAPITOL CONSERVATION	418 GOFF MT RD SUITE 102	CROSS LANES	Leased				X				X
Conservation Agency	EASTERN PANHANDLE CD	151 AIKENS CENTER SUTE	MARTINGSBURG	Owned					X			X
Conservation Agency	ELK CONSERVATION DIS	1336 STATE ST RM200	GASSAWAY	Owned				X				X
Conservation Agency	GREENBRIER VALLEY CD	179 NORTHRIDGE DRIVE	LEWISBURG	Leased					X			X
Conservation Agency	GUYAN CD	2631 FIFTH STREET ROAD	HUNTINGTON	Leased			Y					X
Conservation Agency	LITTLE KANAWHA CD	91 BOYLES AVENUE	PARKERSBURG	Leased				X				X
Conservation Agency	MORGANTOWN FIELD OFF	201 SCOTT AVENUE	MORGANTOWN	Owned				X				X
Conservation Agency	NORTHERN PANHANDLE C	1 BALLPARK DRIVE	MCMECHEN	Leased		X		X				X
Conservation Agency	POTOMAC VALLEY CD	500 EAST MAIN ST	ROMNEY	Leased								X
Conservation Agency	ROMNEY FIELD OFFICE	23161 Northwestern Turnpike	ROMNEY	Leased				X				X
Conservation Agency	ROMNEY FIELD OFFICE	23161 Northwestern Turnpike	ROMNEY	Leased				X	X			X
Conservation Agency	SOUTHERN CD	463 RAGLAND ROAD	BECKLEY	Leased								X
Conservation Agency	TYGARTS VALLEY CD	16346 BARBOUR COUNTY HWY	PHILLIPPI	Owned				X				X
Conservation Agency	UPPER OHIO CONS DIST	201 UNDERWOOD STREET	MIDDLEBOURN	Leased				X				X
Conservation Agency	WEST FORK CD	87 Ollie Lane	MT. CLAIRE	Leased				X				X
Conservation Agency	West Virginia Conservation Agency-SOIL TUNNEL TRAILER	255 GUS R. DOUGLASS LANE BLDG. 5	CHARLESTON	Leased				X				X
Conservation Agency	WESTERN CONSERVATION	224 C FIRST STREET	PT. PLEASANT	Leased			Y	X				X
Consumer Advocate	HUMAN/HEALTH OFFICE	812 Quarrier Street	CHARLESTON	Leased		X		X				X
Corrections	ANTHONY CORRECTIONAL FACILITY	313 ANTHONY CENTER DR.	WHITE SULPHUR SPRINGS	Owned				X				X
Corrections	Beckley Correctional Center and Jail	111 S. EISENHOWER DR.	BECKLEY	Leased								X
Corrections	BECKLEY PAROLE	3225 ROBERT C BYRD DR.	BECKLEY	Leased								X
Corrections	CHARLESTON PAROLE	1339 PLAZA EAST	CHARLESTON	Leased		X						X
Corrections	CLARKSBURG PAROLE	215 WEST MAIN STREET	CLARKSBURG	Leased								X
Corrections	DENMAR CORRECTIONAL FACILITY	4477 DENMAR RD.	HILLSBORO	Owned								
Corrections	DIVISION OF CORRECTIONS OFFICE	1409 GREENBRIER STREET	CHARLESTON	Leased	X	X						X
Corrections	ELKINS PAROLE	1513 HARRISON AVENUE	ELKINS	Leased								X
Corrections	KEYSER PAROLE	102 NORTH MAIN STREET	KEYSER	Leased				X				X
Corrections	LAKIN CORRECTIONAL FACILITY	11264 OHIO RIVER ROAD	WEST COLUMBIA	Owned								X
Corrections	LEWISBURG PAROLE	765 S. JEFFERSON ST.	LEWISBURG	Leased				X	X			X
Corrections	LOGAN PAROLE	1103 GEORGE KOSTAS DR.	LOGAN	Leased				X				X
Corrections	MARTINSBURG PAROLE	1520 WINCHESTER AVENUE	MARTINSBURG	Leased					X			X
Corrections	MBCC MAIN	1406 CHARLESTOWN RD	MARTINSBURG	Owned					X			X
Corrections	MOUNT OLIVE CORRECTIONAL FACILITY	1 MOUNTAINSIDE WAY	MT. OLIVE	Owned								
Corrections	Northern Correctional Facility MAIN	112 Northern Regional Correction Drive	MOUNDSVILLE	Owned								X
Corrections	PRINCETON PAROLE	159 DAVIS ST.	PRINCETON	Leased		X						X
Corrections	PRISON INDUSTRIES	617 LEON SULLIVAN WAY	CHARLESTON	Leased		X						X



Department/ Agency	Facility	Address	City	Owned vs. Leased	1% Flood	0.2% Flood	Levee Failure	Wildfire	Subsidence	Rad. Incidents	Landslide	Hazmat
Corrections	PRUNTYTOWN CORRECTIONAL CENTER	2006 Trap Springs Road	Grafton	Owned								X
Corrections	RIPLEY PAROLE	117 COURT STREET	RIPLEY	Owned				X				X
Corrections	SALEM CORRECTIONAL FACILITY	7 INDUSTRIAL BLVD.	INDUSTRIAL	Owned	X	X		X				X
Corrections	ST.MARY'S CORRECTIONAL FACILITY	2880 N. PLEASANTS HWY.	ST. MARYS	Owned								X
Corrections	WHEELING PAROLE	1025 MAIN STREET	WHEELING	Leased								X
Corrections	WV CORRECTIONS ACDMY	100 HIGH STREET	GLENVILLE	Leased				X				X
Corrections	WV PENITENTIARY	818 JEFFERSON AVENUE	MOUNDSVILLE	Owned								X
Courthouse Facilities Improvement Authority	COURTHOUSE FACILITIE	2003 QUARRIER STREET	CHARLESTON	Owned				X				X
Culture and History	CWC FIRST AID STATIO	1277 WASHINGTON CARVER R	CLIFFTOP	Owned								
Culture and History	DEL F NORONA MUSEUM	801 JEFFERSON AVENUE	MOUNDSVILLE	Owned								X
Culture and History	INDEPENDENCE HALL	1528 MARKET STREET	WHEELING	Owned	X	X						X
Culture and History	VETERAN'S MEMORIAL	GREENBRIER STREET	CHARLESTON	Owned		X						X
Eastern Panhandle Instructional COOP	BERKELEY SPOKES	184 LUTZ AVENUE	MARTINSBURG	Leased					X			X
Eastern Panhandle Instructional COOP	EPIC	109 SOUTH COLLEGE STREET	MARTINSBURG	Leased					X			X
Eastern Panhandle Instructional COOP	GRANT CO. ADULT ED	65 SPRING ST. SUITE A	PETERSBURG	Leased			Y	X				X
Eastern Panhandle Instructional COOP	HS/EHS HEDGESVILLE	143 SCHOOL HOUSE DRIVE	HEDGESVILLE	Owned				X				X
Eastern Panhandle Instructional COOP	HSTART INWOOD (P)	28 LAFAYETTE LANE	INWOOD	Leased								X
Eastern Panhandle Instructional COOP	HSTART LITTLEAGLE(P)	250 MURALL DRIVE	KEARNSVILLE	Leased					X			X
Eastern Panhandle Instructional COOP	HSTART MARLOWE(P)	9580 WILLIAMSPORT PIKE	FALLING WATERS	Leased								X
Eastern Panhandle Instructional COOP	HSTART SJEFFERSON(P)	4599 SUMMIT POINT ROAD	CHARLES TOWN	Leased					X			
Eastern Panhandle Instructional COOP	HSTART SPRG MILLS(P)	109 South College Street	MARTINSBURG	Leased					X			X
Eastern Panhandle Instructional COOP	HSTART ST LEO'S (P)	2109 SULPHUR SPRINGS RD	INWOOD	Leased				X				
Eastern Panhandle Instructional COOP	HSTART TA LOWERY	221 WARM SPRINGS ROAD	SHENANDOAH JUNCTION	Owned					X			X
Eastern Panhandle Instructional COOP	HSTART WIDMYER(P)	50 MYERS ROAD	BERKELEY SPRINGS	Leased	X	X						X
Eastern Panhandle Instructional COOP	HSTARTBERKHEIGHTS(P)	750 HACK WILSON WAY	MARTINSBURG	Leased					X			X
Eastern Panhandle Instructional COOP	HSTARTGRTCACAPON(P)	217 SPRING STREET	GREAT CACAPON	Leased				X				X
Eastern Panhandle Instructional COOP	JEFFERSON SPOKES/AE	401 S. FAIRFAX BLVD.	CHARLES TOWN	Leased					X			X
Eastern Panhandle Instructional COOP	MINERAL SPOKES	600 HARLEY O STAGGERS DR	KEYSER	Leased	X	X						X
Eastern WV Community and Tech. College	EASTERN MAIN CAMPUS	316 EASTERN DRIVE	MOOREFIELD	Owned				X				X



Department/ Agency	Facility	Address	City	Owned vs. Leased	1% Flood	0.2% Flood	Levee Failure	Wildfire	Subsidence	Rad. Incidents	Landslide	Hazmat
Eastern WV Community and Tech. College	NEW BIZ LAUNCH PAD	108 S FORK ROAD STE 201	MOOREFIELD	Owned				X				X
Eastern WV Community and Tech. College	PENDLETON CO HIGH SC	147 MAPLE AVENUE	FRANKLIN	Owned				X				X
Eastern WV Community and Tech. College	TECHNOLOGY CENTER	150 PROVIDENCE LANE	PETERSBURG	Owned			Y					X
Eastern WV Community and Tech. College	TUCKER CO HIGH SCHOOL	116 Mountain Lion Way	HAMBLETON	Owned								X
Economic Development	Economic Development Authority	180 Association Drive	CHARLESTON	Leased								X
Economic Development Authority	GREENWAY BUILDING	160 ASSOCIATION DRIVE	CHARLESTON	Owned								X
Education	ACADEMY PROGRAMS	3 CROSSWIND DRIVE	FAIRMONT	Leased				X				X
Education	BARBOURSVILLE SCHOOL	1535 MARTHA ROAD	BARBOURSVILLE	Owned				X				X
Education	BD OF CHILD CARE	715 BROWN RD	MARTINSBURG	Owned								X
Education	BECKLEY CENTER	4700 ROBERT C BYRD DR	BECKLEY	Owned				X				X
Education	BURLINGTON CENTER	1 RAINBOW LANE	BURLINGTON	Leased				X				
Education	CAMMACK CHILDRENS CT	64 W 6TH AVE	HUNTINGTON	Leased			Y	X				X
Education	CENTRAL REG. JAIL	300 DAYS DRIVE	SUTTON	Owned				X				X
Education	CHARLESTON CORR CTR	1356 HANSFORD ST	CHARLESTON	Leased		X						X
Education	DAVIS STUART-ROBINSO	163 Cottage Drive	LEWISBURG	Owned					X			
Education	DENMAR CORRECTIONAL	4319 Denmar Road	HILLSBORO	Owned								
Education	DR KUHN JUVENILE CNT	1 LORY PLACE	JULIAN	Owned	X	X						X
Education	EAST FAIRMONT HS	1993 AIRPORT RD	FAIRMONT	Leased				X	X			X
Education	EASTERN REG. JAIL	94 Grapevine Road	MARTINSBURG	Owned								X
Education	ELKINS MTN SCH-CLASS	100 BELL STREET	ELKINS	Owned				X				X
Education	FAIRMONT SR HS	1 LOOP PARK DR	FAIRMONT	Leased				X	X			X
Education	GREENBRIER LEARN CTR	197 CHESTNUT ST	LEWISBURG	Leased				X	X			X
Education	HUTTONSVILLE ED.	250 South Huttonsville	HUTTONSVILLE	Owned								X
Education	JH TIGER MORTON JUVENILE CENTER	60 MANFRED HOLLAND WAY	DUNBAR	Owned				X				X
Education	LINCOLN CO HIGH SCH	81 LINCOLN PANTHER WAY	HAMLIN	Leased								X
Education	MORGANTOWN HS	109 WILSON AVE	MORGANTOWN	Leased								X
Education	OHIO CORRECTIONAL CT	1501 EOFF STREET	WHEELING	Owned								X
Education	PARKERSBURG CORR CTR	225 HOLIDAY HILLS DRIVE	PARKERSBURG	Leased				X				X
Education	POCAHONTAS YTH RPT	600 WESLEY CHAPEL ROAD	GREEN BANK	Leased					X			X
Education	PR LAUREL PARK	591 PRESSLEY RIDGE ROAD	CLARKSBURG	Leased								
Education	PR-GRANT GARDENS	2580 GRANT GARDEN ROAD	ONA	Leased				X				X
Education	PRUNTYTOWN EDUCATION	4 Grafton Ave	GRAFTON	Owned				X				X
Education	PUTNAM CO CTC	300 ROOSEVELT BLVD	ELEANOR	Leased								X
Education	ROBERT L SHELL CTR	2 O'HANLON PLACE	BARBOURSVILLE	Leased								X
Education	RON MULHOLLAND JDC	1000 CHAPLINE STREET	WHEELING	Owned								X
Education	SALEM CC-CAREER	15 INDUSTRIAL BLVD	INDUSTRIAL	Owned	X	X		X				X



Department/ Agency	Facility	Address	City	Owned vs. Leased	1% Flood	0.2% Flood	Levee Failure	Wildfire	Subsidence	Rad. Incidents	Landslide	Hazmat
Education	SCOTT HIGH SCHOOL	1 SKYHAWK PL	MADISON	Leased	X	X		X				X
Education	SOUTHERN REG. JAIL	1200 AIRPORT ROAD	BEAVER	Owned								X
Education	STEPPING STONES	1235 BUFFALO CREEK ROAD	HUNTINGTON	Leased				X				X
Education	UNITED HIGH SCHOOL	1349 SHINNSTON PIKE	CLARKSBURG	Leased								X
Education	UNIVERSITY HS	131 BAKERS RIDGE RD	MORGANTOWN	Leased				X				
Education	VICKI V DOUGLASS JUVENILE CENTER	900 EMMETT ROUSCH DR	MARTINSBURG	Owned					X			X
Education	WOOD CO YRC	1400 12TH ST	VIENNA	Leased				X				X
Education	WV CHILDREN'S HOME	109 MAPLE STREET	ELKINS	Owned				X				X
Educational Broadcasting Authority	ROMNEY TV TOWER	1 KM S OF RT50 BETWEEN R	ROMNEY	Owned								X
Educational Broadcasting Authority	WNPB STUDIOS	191 SCOTT AVENUE	MORGANTOWN	Owned				X				X
Educational Broadcasting Authority	WSWP STUDIOS & OFFIC	124 INDUSTRIAL PARK DR	BEAVER	Owned								
Educational Broadcasting Authority	WVPB-TV TRANS & TOWE	9183 BARKER RIDGE ROAD	ONA	Owned				X				
Enterprise Resource Planning Board	WV ERP BOARD	1007 BULLITT STREET	CHARLESTON	Owned		X						X
Environmental Protection	AIR MONITORING TOWER	802 SOUTH QUEEN STREET	MARTINSBURG	Owned					X			X
Environmental Protection	Allison Elementary	605 Railroad Street	CHESTER	Owned				X		X		X
Environmental Protection	AML Northern District Office	101 CAMBRIDGE PLACE	BRIDGEPORT	Leased				X				X
Environmental Protection	AML SOUTHERN DISTRICT OFFICE	1159 NICK RAHALL GREENWAY	FAYETTEVILLE	Leased				X				
Environmental Protection	BLACKWATER PROJECT APARTMENTS	113 Blackwater Avenue	DAVIS	Owned				X				
Environmental Protection	CHARLESTON BAPTIST M	209 MORRIS STREET	CHARLESTON	Leased		X						X
Environmental Protection	CLIMATE CON STORAGE	104 VAN KIRK DRIVE	FAIRMONT	Owned								
Environmental Protection	DAQ Eastern Panhandle Regional Office (EPRO)	22288 Northwestern Pike	ROMNEY	Owned								X
Environmental Protection	DEP GUTHRIE LAB	4750 BRENDA LANE	CHARLESTON	Owned				X				X
Environmental Protection	DEP PHILIPPI	105 S RAILROAD STREET	PHILIPPI	Owned	X	X		X				X
Environmental Protection	DEP WHEELING	131-A PENINSULA STREET	WHEELING	Leased		X						X
Environmental Protection	DIXIE STREET	1436 DIXIE STREET	CHARLESTON	Leased		X		X				X
Environmental Protection	DMR LOGAN FIELD OFFICE	1101 GEORGE KOSTAS DRIVE	LOGAN	Leased				X				X
Environmental Protection	ELKVIEW STORAGE	4998 SOUTH ELK RIVER RD	ELKVIEW	Leased	X	X		X				X
Environmental Protection	HENDERSON CENTER	1801 3rd Ave	HUNTINGTON	Leased			Y					X
Environmental Protection	Homeland Security Emergency Response	4994 ELK RIVER ROAD S	ELKIEW	Leased	X	X		X				X
Environmental Protection	JANES BUILDING	13 N. MAIN STREET	PHILIPPI	Leased	X	X		X				X
Environmental Protection	NEW MANCHESTER ELEME	128 Frankfort Road	New Cumberland	Owned				X		X		X
Environmental Protection	OER Fairmont Field Office	2031 PLEASANT VALLEY RD.	FAIRMONT	Leased								X
Environmental Protection	PRINDLE FIELD	1313 14TH STREET	HUNTINGTON	Leased				X				X
Environmental Protection	S. CHARLESTON LIBRAR	312 FOURTH AVENUE	SO. CHARLESTON	Leased		X		X				X
Environmental Protection	SAM BLACK CHURCH	118 Sam Black Church Road	Smoot	Owned				X				
Environmental Protection	SECURE STORAGE LLC	800 NORTHSIDE DRIVE	SUMMERSVILLE	Leased								X



Department/ Agency	Facility	Address	City	Owned vs. Leased	1% Flood	0.2% Flood	Levee Failure	Wildfire	Subsidence	Rad. Incidents	Landslide	Hazmat
Environmental Protection	WARWOOD WATER TREATM	1305 RICHLAND AVENUE	WHEELING	Owned								X
Environmental Protection	WASHINGTON IRVING JR SCHOOL	443 Lee Ave	CLARKSBURG	Owned								X
Environmental Protection	WV NATIONAL GUARD	1501 NINTH AVE.	MOUNDSVILLE	Owned				X				X
Fairmont State University	UNIVERSITY	1201 LOCUST AVENUE	FAIRMONT	Owned				X				X
Fire Commission	OFFICE OF THE STATE FIRE MARSHAL	1207 QUARRIER ST.	CHARLESTON	Owned		X						X
Forestry	Cabwaylingo State Forest	4279 Cabwaylingo Park Road	Dunlow	Unknown	X	X						
Forestry	Calvin Price State Forest	4800 Watoga Park Road	Marlinton	Unknown								
Forestry	Coopers Rock State Forest	61 County Line Drive	Bruceston Mills	Unknown								X
Forestry	DNR DISTRICT 2 OFFICE	1 DEPOT STREET	ROMNEY	Leased				X				X
Forestry	Greenbrier State Forest	1541 Harts Run Road	Caldwell	Unknown	X	X						
Forestry	Kanawha State Forest	7500 Kanawha State Forest Drive	Charleston	Unknown								
Forestry	Kumbrabow State Forest	219 Kumbrabow Road	Huttonsville	Unknown								X
Forestry	OFFICE-COLD STORAGE	101 ALLISON DRIVE	WEST COLUMBIA	Owned				X				X
Forestry	Panther State Forest	239 Ostenaco Road	Panther	Unknown	X	X						
Forestry	PLAYERS CLUB OFFICE of MINERS' HEALTH, SAFETY & TRAINING	7 PLAYERS CLUB DRIVE	CHARLESTON	Owned				X				X
Forestry	R1 KINGWOOD OFFICE	157 PLAZA COURT	KINGWOOD	Leased								X
Forestry	R1 MT CLARE	87 OLLIE LANE	MT CLARE	Leased				X				X
Forestry	R2 INWOOD STORAGE	147 PILGRIM ROAD	INWOOD	Owned					X			X
Forestry	R3 BUCKHANNON-STORG1	61ST STREET	BUCKHANNON	Leased				X				
Forestry	R3 MARLINTON OFFICE	300-B SECOND AVENUE	MARLINTON	Leased	X	X		X				X
Forestry	R4 BECKLEY OFFICE	330 HARPER PARK DR.ST.J	BECKLEY	Leased				X				X
Forestry	R5 MILTON OFFICE	878 MAIN STREET	MILTON	Leased	X	X		X				X
Forestry	R5 MINGO	1344 HOLLY RIDGE ROAD	DELBARTON	Owned								
Forestry	R6 ELIZABETH OFC	25 SCHOOLVIEW STREET	ELIZABETH	Owned								X
Forestry	Seneca State Forest	10135 Browns Creek Road	Dunmore	Unknown								X
Forestry	SUPT RESIDENCE	48 WOODRUM LANE	WEST COLUMBIA	Owned				X				X
Forestry	URBAN AND COMMUNITY FORESTRY	1106 RAILROAD STREET	FARMINGTON	Leased	X	X		X				X
Geological and Economic Survey	MONT CHATEAU OFFICE GEOLOGICAL AND ECONOMIC SURVEY	1 MONT CHATEAU RD.	MORGANTOWN	Owned								X
Glenville State College	COLLEGE	200 HIGH STREET	GLENVILLE	Owned				X				X
Governor	GOVERNOR'S MANSION	1716 KANAWHA BLVD E	CHARLESTON	Owned		X						X
Health and Human Resources	ADMIN. BLDG. ROMNEY	1 BLUE STREET	ROMNEY	Owned				X				X
Health and Human Resources	BARBOUSVILLE SCHOOL	1535 Martha Roas	BARBOURSVILLE	Owned				X				X
Health and Human Resources	BATEMAN ADMIN B1	1530 NORWAY AVE	HUNTINGTON	Owned				X				
Health and Human Resources	BCF CENTRAL INTAKE	320 ADAMS STREET	FAIRMONT	Leased								X
Health and Human Resources	BCF MONONGALIA ANNEX	124 HIGH STREET	MORGANTOWN	Leased								X
Health and Human Resources	BCF OFFCE GREENBRIER	150 MAPLEWOOD AVENUE	LEWISBURG	Leased					X			X
Health and Human Resources	BCF OFFICE BARBOUR C	271 MATTALIANO DRIVE	PHILIPPI	Leased				X	X			X
Health and Human Resources	BCF OFFICE BERKELEY	433 MIDATLANTIC PARKWAY	MARTINSBURG	Leased					X			X



Department/ Agency	Facility	Address	City	Owned vs. Leased	1% Flood	0.2% Flood	Levee Failure	Wildfire	Subsidence	Rad. Incidents	Landslide	Hazmat
Health and Human Resources	BCF OFFICE BOONE CO.	156 RESOURCE LANE	FOSTER	Leased				X				X
Health and Human Resources	BCF OFFICE BRAXTON	3708 SUTTON LANE	SUTTON	Leased								X
Health and Human Resources	BCF OFFICE CALHOUN C	85 INDUSTRIAL PARK ROAD	GRANTSVILLE	Leased	X	X		X				X
Health and Human Resources	BCF OFFICE CLAY CO.	131 MAIN STREET	CLAY	Leased				X	X			X
Health and Human Resources	BCF OFFICE DODDRIDGE	22 HERBERT AVENUE	SMITHBURG	Leased				X				X
Health and Human Resources	BCF OFFICE FAYETTE C	1400 VIRGINIA STREET	OAK HILL	Leased				X				X
Health and Human Resources	BCF OFFICE GILMER CO	1493 WV HWY. 5 E	GLENVILLE	Leased				X				X
Health and Human Resources	BCF OFFICE GRANT CO.	53 KIESS DRIVE	PETERSBURG	Leased				X				X
Health and Human Resources	BCF OFFICE HAMPSHIRE	24954 NORTHWESTERN PIKE	ROMNEY	Leased				X				X
Health and Human Resources	BCF OFFICE HARDY CO.	149 RCB INDUST PARK RD	MOOREFIELD	Leased			Y	X				X
Health and Human Resources	BCF OFFICE HARRISON	153 W MAIN ST.	CLARKSBURG	Leased				X				X
Health and Human Resources	BCF OFFICE JACKSON C	2139 CEDAR LAKES ROAD	RIPLEY	Leased				X				X
Health and Human Resources	BCF OFFICE JEFFERSON	240 WILLOW SPRING DRIVE	CHARLES TOWN	Leased					X			X
Health and Human Resources	BCF OFFICE LEWIS CO	91 ARNOLD AVE	WESTON	Leased	X	X						X
Health and Human Resources	BCF OFFICE LINCOLN C	8209 COURT AVENUE	HAMLIN	Leased				X				X
Health and Human Resources	BCF OFFICE LOGAN CO.	130 STRATTON ST.	LOGAN	Leased								X
Health and Human Resources	BCF OFFICE MARSHALL	400 TELETEC DR.	MOUNDSVILLE	Leased				X				X
Health and Human Resources	BCF OFFICE MASON CO.	1406 KANAWHA STREET	POINT PLEASANT	Leased			Y					X
Health and Human Resources	BCF OFFICE MERCER CO	200 DAVIS STREET	PRINCETON	Leased		X						X
Health and Human Resources	BCF OFFICE MINERAL C	18N. TORNADO WAY	KEYSER	Leased				X				X
Health and Human Resources	BCF OFFICE MINGO CO.	203 EAST THIRD AVENUE	WILLIAMSON	Leased		X	Y	X				X
Health and Human Resources	BCF OFFICE MONONGALI	114 SOUTH HIGH STREET	MORGANTOWN	Leased								X
Health and Human Resources	BCF OFFICE MONROE CO	174 RT. 3 EAST	UNION	Leased				X	X			X
Health and Human Resources	BCF OFFICE MORGAN CO	84-1 REGAL COURT	BERKELEY SPRINGS	Leased				X				X
Health and Human Resources	BCF OFFICE NICHOLAS	707 PROFESSIONAL PARK DR	SUMMERSVILLE	Leased								X
Health and Human Resources	BCF OFFICE OHIO CO.	69 16TH STREET	WHEELING	Leased								X
Health and Human Resources	BCF OFFICE PLEASANTS	1655 S. PLEASANTS HWY	ST. MARYS	Leased				X				X
Health and Human Resources	BCF OFFICE POCAHONTA	211 VALHALLA LANE	MARLINTON	Leased				X			X	
Health and Human Resources	BCF OFFICE PRESTON C	18351 VET. MEM. HIGHWAY	KINGWOOD	Leased				X				X
Health and Human Resources	BCF OFFICE PUTNAM CO	3405 WINFIELD ROAD	WINFIELD	Leased		X		X				X
Health and Human Resources	BCF OFFICE RALEIGH C	407 NEVILLE STREET	BECKLEY	Leased								X
Health and Human Resources	BCF OFFICE RANDOLPH	1027 NORTH RANDOLPH AVE.	ELKINS	Leased				X				X
Health and Human Resources	BCF OFFICE RITCHIE C	220 WEST MAIN ST.	HARRISVILLE	Leased				X				X
Health and Human Resources	BCF OFFICE ROANE CO.	677 RIPLEY RD STE 3	SPENCER	Leased	X	X		X				X
Health and Human Resources	BCF OFFICE TAYLOR CO	235 BARRETT STREET	GRAFTON	Leased								X
Health and Human Resources	BCF OFFICE TUCKER CO	9346 SENECA TRAIL	PARSONS	Leased				X				X
Health and Human Resources	BCF OFFICE TYLER CO.	210 MAIN STREET	MIDDLEBOURNE	Leased				X				X
Health and Human Resources	BCF OFFICE UPSHUR CO	34 Auction Lane	BUCKHANNON	Leased								X
Health and Human Resources	BCF OFFICE WAYNE CO.	203 KENOVA AVENUE	WAYNE	Owned	X	X						X



Department/ Agency	Facility	Address	City	Owned vs. Leased	1% Flood	0.2% Flood	Levee Failure	Wildfire	Subsidence	Rad. Incidents	Landslide	Hazmat
Health and Human Resources	BCF OFFICE WEBSTER C	110 N MAIN ST STE 201	WEBSTER SPRINGS	Leased				X	X			X
Health and Human Resources	BCF OFFICE WETZEL CO	1236 NORTH STATE RT 2	NEW MARTINSVILLE	Leased				X				X
Health and Human Resources	BCF OFFICE WIRT CO.	124 COURT ST STE 3	ELIZABETH	Leased				X				X
Health and Human Resources	BCF OFFICE WOOD CO.	400 5TH STREET	PARKERSBURG	Leased								X
Health and Human Resources	BCF OFFICE WYOMING C	1767 BEAR HOLE RD	PINEVILLE	Leased								X
Health and Human Resources	BCSE OFFICE BRAXTON	3734 SUTTON LANE	SUTTON	Leased								X
Health and Human Resources	BCSE OFFICE MON.	116 SOUTH HIGH STREET	MORGANTOWN	Leased								X
Health and Human Resources	BERKELEY OFFICE OEPS	312 WEST KING ST	MARTINSBURG	Leased					X			X
Health and Human Resources	CENTER FOR THREAT PREP	505 CAPITOL STREET	CHARLESTON	Leased		X						X
Health and Human Resources	CHEMISTRY LAB BIG CH	4710 CHIMNEY DRIVE	BIG CHIMNEY	Leased				X				X
Health and Human Resources	CHILDREN'S HOME - DW	230 Heavner Ave	ELKINS	Owned				X				X
Health and Human Resources	CHILDREN'S HOME - ED	230 HEAVNER AVENUE	ELKINS	Owned				X				X
Health and Human Resources	CHURCH LANE GRP HOME	226 CHURCH LANE 3RD STRE	PRINCETON	Owned				X				X
Health and Human Resources	CLAIMS AND COLLECTIONS OFFICE	4190 WASHINGTON STREET W	CHARLESTON	Leased		X						X
Health and Human Resources	Criminal Investigations - Welch Office	840 VIRGINIA AVE	WELCH	Leased								X
Health and Human Resources	DEVELOP. DISABILTIES	110 STOCKTON STREET	CHARLESTON	Leased	X	X		X				X
Health and Human Resources	DIAMOND PARKING GARA	507-599 Dickinson Street	CHARLESTON	Owned		X		X				X
Health and Human Resources	FAIRMONT GROUP HOME	100 CROSSWINDS DRIVE	FAIRMONT	Owned								X
Health and Human Resources	FMRS ADMIN JWH	101 EISENHOWER DR.	BECKLEY	Owned				X				X
Health and Human Resources	FRONT END FRAUD	320 SUMMERS ST	HINTON	Leased				X				X
Health and Human Resources	GROUP HOME BECKLEY	106 AUSTIN AVENUE	BECKLEY	Owned				X				X
Health and Human Resources	GROUP HOME BECKLEY	811 SO. KANAWHA ST.	BECKLEY	Owned								
Health and Human Resources	GROUP HOME CHARLESTO	1001 SMITH STREET	CHARLESTON	Owned		X						X
Health and Human Resources	GROUP HOME DUNBAR/KA	2305 DUNBAR AVENUE	DUNBAR	Unknown	X	X		X				X
Health and Human Resources	GROUP HOME HUNTINGTO	821 VIRGINIA AVENUE	HUNTINGTON	Leased			Y	X				X
Health and Human Resources	GROUP HOME HUNTINGTO	1519-43 8TH AVENUE	HUNTINGTON	Owned								X
Health and Human Resources	GROUP HOME MCMECHEN/	12TH & RIVERVIEW STS	MCMECHEN	Owned		X		X				X
Health and Human Resources	GROUP HOME MORGANTOW	904 CURTIS AVE. & MANLOV	MORGANTOWN	Owned				X				X
Health and Human Resources	GROUP HOME SUMMERSVI	509 DUFFY STREET	SUMMERSVILLE	Owned				X				X
Health and Human Resources	GROVE CENTER MAIN	270 CUMBO ROAD	MARTINSBURG	Owned				X	X			X
Health and Human Resources	HEALTH CARE AUTH	100 DEE DRIVE	CHARLESTON	Leased				X				X
Health and Human Resources	Health Facility Licensure and Certification, Office of	408 LEON SULLIVAN WAY	CHARLESTON	Leased		X						X
Health and Human Resources	HEALTHWAYS OHIO CO	201 EDGINGTON LANE	WHEELING	Owned				X	X			
Health and Human Resources	HOPEMONT HOSP	150 Hopemont Drive	TERRA ALTA	Owned								X
Health and Human Resources	HUMAN RIGHTS COMMISS	1321 PLAZA EAST	CHARLESTON	Leased		X						X
Health and Human Resources	JACKIE WITHROW HOSPI	105 S. EISENHOWER (RT. 1	BECKLEY	Owned				X				X
Health and Human Resources	KANAWHA BCSE	231 CAPITOL STREET#200	CHARLESTON	Leased		X		X				X
Health and Human Resources	Laboratory Services, Office Of	167 11TH AVENUE	SOUTH CHARLESTON	Owned		X						X
Health and Human Resources	LAKIN HOSPITAL	11522 Ohio River Road	West Columbia	Owned								X



Department/ Agency	Facility	Address	City	Owned vs. Leased	1% Flood	0.2% Flood	Levee Failure	Wildfire	Subsidence	Rad. Incidents	Landslide	Hazmat
Health and Human Resources	MANCHIN HOSPITAL	401 GUFFY STREET	FAIRMONT	Owned				X				X
Health and Human Resources	MEDICAL EXAMINER OFFICE	619 VIRGINIA STREET	CHARLESTON	Owned		X		X				X
Health and Human Resources	MHC EASTERN PANHANDL	235 S. WATER STREET	MARTINSBURG	Owned					X			X
Health and Human Resources	MHC HEALTHWAYS MENTA	501 S. COLLIER WAY	WEIRTON	Owned				X				X
Health and Human Resources	MHC LOGAN-MINGO CTR.	2954 Burffalo Creek Road	Chattaroy	Owned				X				
Health and Human Resources	MHC PRESTERA CENTER	3375 Us Route 60 East	HUNTINGTON	Owned				X				X
Health and Human Resources	MHC PRESTERA CHARLES	511 MORRIS ST.	CHARLESTON	Owned		X						X
Health and Human Resources	MHC SENCA MH/MR CTR.	1 STEVENS ROAD	SUMMERSVILLE	Owned								X
Health and Human Resources	MHC SOUTHERN HIGHLAN	200 12TH STREET	PRINCETON	Owned				X				X
Health and Human Resources	MHC SUMMIT CTR. FOR	6 Hospital Plz	CLARKSBURG	Owned								X
Health and Human Resources	MHC VALLEY MENTAL HE	301 Scott Avenue	MORGANTOWN	Owned				X				X
Health and Human Resources	MHC WESTBROOK	2121 7TH STREET	PARKERSBURG	Owned				X				X
Health and Human Resources	MIRADOR WEST TRANS	1460 36TH STREET	PARKERSBURG	Owned								X
Health and Human Resources	MONONGALIA OMCFH	1000 ELMER PRINCE DRIVE	MORGANTOWN	Owned				X				X
Health and Human Resources	OCME WAREHOUSE	4 CRADDOCK WAY	POCA	Leased		X		X				X
Health and Human Resources	OEHS BECKLEY	100 PRINCE STREET	BECKLEY	Leased								X
Health and Human Resources	OEHS KEARNEYSVILLE	44 WILTSHIRE ROAD	KEARNEYSVILLE	Leased					X			
Health and Human Resources	OEHS WATER LAB	808 B STREET	ST. ALBANS	Leased				X				X
Health and Human Resources	OEHS WHEELING	1060 CHAPLINE STREET	WHEELING	Leased				X				X
Health and Human Resources	OEPS AND OMCFH RFS	330 WEST MAIN STREET	CLARKSBURG	Leased								X
Health and Human Resources	OEPS CONTACT TRACE	500 SUMMERS ST SUITE 200	CHARLESTON	Leased		X						X
Health and Human Resources	OFFICE OF DRUG CONTROL POLICY	ONE DAVIS SQUARE	CHARLESTON	Leased		X		X				X
Health and Human Resources	OFFICE OF EMERGENCY MEDICAL SERVICES	350 CAPITOL STREET	CHARLESTON	Owned		X						X
Health and Human Resources	OLD BLUEFIELD GRPHOM	226 OLD BLUEFIELD RD., S	PRINCETON	Owned		X		X				X
Health and Human Resources	OLS NEWBORN SCREEN	1740 UNION CARBIDE DRIVE	SOUTH CHARLESTON	Leased				X				X
Health and Human Resources	PAUL MILLER HOME OFF	2ND STREET	NORTHFORK	Owned	X	X		X				X
Health and Human Resources	SHARPE HOSPITAL	936 Sharpe Hospital Road	WESTON	Owned								X
Health and Human Resources	SHARPE TRANSITIONAL	835 SHARPE HOSPITAL ROAD	WESTON	Owned								
Health and Human Resources	WAREHOUSE BULLITT ST	900 BULLITT STREET	CHARLESTON	Leased		X						X
Health and Human Resources	WCH WAREHOUSE	145 MCDOWELL STREET	WELCH	Leased	X	X		X				X
Health and Human Resources	WELCH HOSPITAL MAINT	454 MCDOWELL STREET	WELCH	Owned	X	X		X				X
Health and Human Resources	WOOD COUNTY BCF TEMP	980 ALTMAN AVENUE	PARKERSBURG	Leased				X				X
Higher Education Policy Commission	BOULEVARD TOWERS	1018 KANAWHA BLVD	CHARLESTON	Leased		X						X
Higher Education Policy Commission	BUILDING 702	1200 A SCIENCE PARK DRIV	SOUTH CHARLESTON	Owned								X
Higher Education Policy Commission	BUILDING 706	1100 SCIENCE PARK DRIVE	SOUTH CHARLESTON	Owned								X
Higher Education Policy Commission	BUILDING 707	1150 SCIENCE PARK DRIVE	SOUTH CHARLESTON	Owned								X



Department/ Agency	Facility	Address	City	Owned vs. Leased	1% Flood	0.2% Flood	Levee Failure	Wildfire	Subsidence	Rad. Incidents	Landslide	Hazmat
Higher Education Policy Commission	BUILDING 710	1200 B SCIENCE PARK DR.	SOUTH CHARLESTON	Owned								X
Higher Education Policy Commission	BUILDING 718	3200 KANAWHA TURNPIKE	SOUTH CHARLESTON	Owned								X
Higher Education Policy Commission	BUILDING 770	770 Wadia Circle	SOUTH CHARLESTON	Owned								X
Higher Education Policy Commission	BUILDING 771	70 INNOVATION CIRCLE	SOUTH CHARLESTON	Owned				X				
Higher Education Policy Commission	HEALTH SCIENCES WING	280 UNIVERSITY DRIVE	BEAVER	Owned								X
Higher Education Policy Commission	WV Regional Technology Park	1740 Union Carbide Drive	SOUTH CHARLESTON	Owned				X				X
Highways	(OLD D HQ) - SIGN SH	720 DEPOT STREET	PARKERSBURG	Owned								X
Highways	APPALACHIAN HQ	281 TUNNEL HILL RD	SALEM	Owned								X
Highways	ASPHALT TANK	119 RAIL CROSS RD	CLARKSBURG	Owned								X
Highways	BERKELEY CTY. HDQ.	591 ROCK CLIFF DRIVE	MARTINSBURG	Owned					X			X
Highways	Bolt Highway Department	2324 Bolt Road	Bolt	Unknown	X	X		X				X
Highways	BOOSTER BLDG	KANAWHA STREET	BURNSVILLE	Owned				X				X
Highways	BRINE TANK #2	7619 S CALHOUN HWY	MILLSTONE	Owned								X
Highways	Bruceton Mills Department Of Transportation	360 County Route 73/73	Bruceton Mills	Unknown								X
Highways	Cabin Creek Transportation Department Highway	14987 Maccorkle Avenue	Cabin Creek	Unknown		X						X
Highways	CHEMICAL STORAGE SHE	253 RIVER HILL ROAD	PARKERSBURG	Owned	X	X	Y	X				X
Highways	COALFIELDS SUBHQ	1790 ROBERT C DR	CRAB ORCHARD	Owned				X				X
Highways	COLD MIX SHED	103 FRAME RD	ELKVIEW	Owned	X	X						X
Highways	COLD MIX SHED	2360 MACCORKLE AVE	ST ALBANS	Owned		X						X
Highways	COLD MIX SHED	3183 N PLEASANTS HIGHWAY	ST. MARY'S	Owned								X
Highways	COLD MIX SHED	401 CHAMPION DR	CHARLESTON	Owned				X				X
Highways	COLD MIX SHED	851 NORTH STREETCAR WAY	LOST CREEK	Owned				X				X
Highways	COLD PATCH/SAND	100 HQ LANE	HANOVER	Owned				X				X
Highways	CONST OFFICE&STORAGE	15001 MACCORKLE AVENUE	CHELYAN	Owned		X		X				X
Highways	COOPERS ROCK HQ/ RADIO TOWER	360 OLD RT 73	BRUCETON MILLS	Owned								X
Highways	COUNTY HEADQUARTERS	166 DOH LANE	BERKELEY SPRINGS	Owned				X				X
Highways	COUNTY HEADQUARTERS	1912 ST JOE ROAD	ALBRIGHT	Owned								
Highways	COUNTY HEADQUARTERS	379 MARKET ROAD	BECKLEY	Owned				X				X
Highways	COUNTY HEADQUARTERS	3RD STREET & WV152	WAYNE	Owned	X	X		X				X
Highways	COUNTY HEADQUARTERS	401 Champion Drive	CHARLES TOWN	Owned				X				X
Highways	CSX COMMUNICATIONS	CENTER, MADISON AVE.	HUNTINGTON	Owned			Y					X
Highways	D-1 BRIDGE BLDG	1338 SMITH STREET	CHARLESTON	Owned		X						X
Highways	D-7 BRIDGE DEPARTMEN	255 DEPOT STREET	WESTON	Owned	X	X		X				X
Highways	D8 EQUIPMENT SHOP	1101 N RANDOLPH AVE	ELKINS	Owned				X				X



Department/ Agency	Facility	Address	City	Owned vs. Leased	1% Flood	0.2% Flood	Levee Failure	Wildfire	Subsidence	Rad. Incidents	Landslide	Hazmat
Highways	Danville Transportation Department Garage	203 Doh Garage Road	Danville	Unknown								X
Highways	Department Of Transportation West Virginia	3025 Lake Washington Road	Washington	Unknown				X				X
Highways	DIST. SIGN SHOP	C.R. 18	BURLINGTON	Owned		X						X
Highways	District 1 Headquarters	1340 Smith Street	Charleston	Unknown		X						X
Highways	DISTRICT 10 HEADQUAR	270 HARDWOOD LANE	PRINCETON	Owned				X				X
Highways	District 10 Headquarters	270 Hardwood Lane	Princeton	Unknown				X				X
Highways	District 3 Headquarters	624 Depot Street	Parkersburg	Unknown								X
Highways	DISTRICT 3 MATERIALS	624-632 6TH STREET	PARKERSBURG	Unknown								X
Highways	District 5 Headquarters	2120 Northwestern Turnpike	Burlington	Unknown								X
Highways	District 6 Headquarters	1 DOT Drive	Moundsville	Unknown								X
Highways	District 7 Headquarters	131 Highland Drive	Weston	Unknown				X				X
Highways	DISTRICT HQ #3	620 DEPOT STREET	PARKERSBURG	Owned								X
Highways	DISTRICT LAB	1081 COUNTRY CLUB BLVD	FAIRMONT	Owned				X	X			X
Highways	DISTRICT NINE HQ	146 STONEHOUSE ROAD	LEWISBURG	Owned				X				
Highways	DISTRICT SHOP	101 KERENS AVENUE	ELKINS	Owned			Y	X				X
Highways	DISTRICT SHOP	1029 NINTH STREET	HUNTINGTON	Owned				X				X
Highways	DISTRICT TWO HDQT.	801 MADISON AVENUE	HUNTINGTON	Owned			Y	X				X
Highways	DMV REGIONAL OFFICE	2 Armory Way	SUMMERSVILLE	Owned								X
Highways	DMV REGIONAL OFFICE	601 LUBECK AVENUE	PARKERSBURG	Owned				X				X
Highways	EQUIPMENT & STORAGE	231 LONG RUN RD	GREENWOOD	Owned				X				X
Highways	EQUIPMENT SHED	11923 CHARLESTON RD	RED HOUSE	Owned		X		X				X
Highways	EQUIPMENT SHED	2260 PENNSYLVANIE AVE N	CHARLESTON	Owned		X						X
Highways	FORMER SHAWNEE HILLS	801 RUFFNER AVENUE	CHARLESTON	Owned		X						X
Highways	GARAGE	1993 SMITHTON ROAD	WEST UNION	Owned				X				X
Highways	Gassaway Transportation Department	2642 State Street	Gassaway	Unknown				X				X
Highways	Harrison Transportation Department	134 South Penn Avenue	Harrisville	Unknown				X				X
Highways	Highway Department New Cumberland	64 Rockside Drive	Hamlin	Unknown								X
Highways	INTERSTATE HQ	95 GOSHEN RD	MORGANTOWN	Owned								X
Highways	INTERSTATE REST AREA	INTERSTATE 64	HUNTINGTON	Owned				X				X
Highways	Lewisburg Transportation Department	103 Church Street	Lewisburg	Unknown					X			X
Highways	LOGAN CO. HQ	8100 OLD LOGAN RD	CHAPMANVILLE	Owned				X				X
Highways	MAINTENANACE HDQ	COUNTY ROUTE 27	BRAGG	Owned				X				X
Highways	MAINTENANCE HQ	505 CHARLESTON ROAD	SPENCER	Owned	X	X		X				X
Highways	MAINTENANCE HQ	WV 32	THOMAS	Owned			Y	X				X
Highways	MAINTENANCE SHQ	23236 GEORGE WASH. HWY	AURORA	Owned				X				X
Highways	MAINTENANCE SHQ	32353 VETERANS MEM HWY	TERRA ALTA	Owned					X			X
Highways	MAINTENANCE SHQ	42 CLOVIS BRIDGE RD	PENTRESS	Owned	X	X		X				X
Highways	MAINTENANCE SHQ/RADIO TOWER	14115 N PRESTON HWY	BRUCETON MILLS	Owned								X



Department/ Agency	Facility	Address	City	Owned vs. Leased	1% Flood	0.2% Flood	Levee Failure	Wildfire	Subsidence	Rad. Incidents	Landslide	Hazmat
Highways	Materials Control, Soils, and Testing Div.	190 DRY BRANCH ROAD	CHARLESTON	Owned								X
Highways	MATERIALS SHED	9288 COAL RIVER ROAD	SETH	Owned	X	X						X
Highways	METAL STORAGE	2453 COALTONPUMPKINTWNRD	COALTON	Owned								
Highways	METAL STORAGE	76 COUNTRY CLUB RD	ELKINS	Owned				X				X
Highways	METAL STORAGE BLDG	454 NEW HOPE RD	PRINCETON	Owned		X		X				X
Highways	MOBILE HOME	85 WALNUT BOTTOM RD	MOOREFIELD	Owned								
Highways	MOBILE HOME (OFFICE)	157 KNOBLEY ROAD	MAYSVILLE	Owned				X				X
Highways	MON. H.Q. SALT BLDG.	1510 GRAFTON RD	MORGANTOWN	Owned				X				X
Highways	NELSONS'S BLDG.	641-642 6TH STREET	PARKERSBURG	Owned								X
Highways	New Cumberland Highway Department	1936 Veterans Boulevard	New Cumberland	Unknown				X				X
Highways	NUCLEAR BUILDING	6TH STREET	PARKERSBURG	Owned								X
Highways	OFFICE BLDG/SHOP	252 FAIRGROUND RD	PT PLEASANT	Owned				X				X
Highways	OFFICE TRAILER	7338 WV RT 10	WEST HAMLIN	Owned				X				X
Highways	OFFICE/GARAGE	5213 GEORGE WASHINGTON H	TUNNELTON	Owned				X				X
Highways	OFFICE/SHOP	1311 SMITH STREET	CHARLESTON	Owned		X		X				X
Highways	OLD AG. BLDG	601 SUMMERS ST	CHARLESTON	Owned		X						X
Highways	REST AREA	I-79	FRAMETOWN	Owned								X
Highways	REST AREA	I-77 SOUTH BOUND	MINERAL WELLS	Owned	X	X						X
Highways	REST AREA E/W BOUND	335 I-64	HURRICANE	Owned								X
Highways	Ripley Transportation Department	946 Clay Lick Road	Ripley	Unknown								X
Highways	SALT SHED	3823 BENEDUM DRIVE	BRIDGEPORT	Owned								X
Highways	SALT SHED	5205 HUSKY HIGHWAY	MANNINGTON	Owned								X
Highways	SALT SHED	80 COON KNOB RD	SUTTON	Owned								X
Highways	SALT STORAGE BLDG	916 COUNTRY CLUB RD	FAIRMONT	Owned				X	X			X
Highways	SALT STORAGE SHED	2800 WASHINGTON STREET W	CHARLESTON	Owned				X				X
Highways	Spencer Transportation Department	269 Charleston Road	Spencer	Unknown								X
Highways	SPREADER RACK	1173 WINFIELD RD	ST ALBANS	Owned				X				X
Highways	SPREADER RACK	51 APPLICHIAN HIGHWAY	SUTTON	Owned								X
Highways	SRIC MIXING SHED	937 US HIGHWAY 19 SOUTH	WESTON	Owned								X
Highways	SRIC SPREADER RAC	309 MUDLICK RD	WESTON	Owned	X	X						X
Highways	State of West Virginia Highways Division	1845 Main Street East	Oak Hill	Unknown				X				X
Highways	State of West Virginia Highways Division	3304 Teays Valley Road	Hurricane	Unknown				X				X
Highways	STEPPING STONE BOYS	2387 EAST GRAFTON RD	FAIRMONT	Owned				X				X
Highways	STORAGE BUILDING	101 STATE STREET	GASSAWAY	Owned				X				X
Highways	STORAGE BUILDING	1439 MAINSFIELD DR	PHILIPPI	Owned				X				X
Highways	STORAGE BUILDING	1936 VETERANS BLVD	NEW CUMBERLAND	Owned				X				X
Highways	STORAGE BUILDING	2460 MURPHY'S RUN ROAD	BRIDGEPORT	Owned								X
Highways	STORAGE BUILDING - S	416 US HIGHWAY 33	WESTON	Owned								X
Highways	STORAGE POD	83 BRUSHY FORK RD	BUCKHANNON	Owned								X



Department/ Agency	Facility	Address	City	Owned vs. Leased	1% Flood	0.2% Flood	Levee Failure	Wildfire	Subsidence	Rad. Incidents	Landslide	Hazmat
Highways	STORAGE POD	131 HIGHLAND DR	WESTON	Owned				X				X
Highways	STORAGE POD	493 MUD LICK RD	BUCKHANNON	Owned				X				X
Highways	TAYLOR HEADQUARTERS	1340 TRAP SPRINGS RD	GRAFTON	Owned				X				X
Highways	Technical Support Division	1334 SMITH ST	CHARLESTON	Owned		X						X
Highways	Transportation Department Morgantown	95 Goshen Road	Morgantown	Unknown								X
Highways	Transportation Department New Martinsville	641 West Virginia 2	New Martinsville	Unknown				X				X
Highways	TYLER COUNTY HDQ	730 TYLER HIGHWAY	SISTERVILLE	Owned				X				X
Highways	VISITOR CENTER	1 Waterfront PI	MORGANTOWN	Owned								X
Highways	Wayne Highway Department Garage	326 3rd Street	Wayne	Unknown		X		X				X
Highways	WEBSTER COUNTY HQ	138 BAKER STREET	WEBSTER SPRINGS	Leased				X	X			X
Highways	WEIGH STATION OFFICE	I-70	WHEELING	Owned				X				X
Highways	WEIGH STATION/TRUCK	174 CASTEEL RD	BRUCETON MILLS	Owned								X
Highways	West Virginia Department Of Highways	1867 Rock Cliff Drive	Martinsburg	Unknown					X			X
Highways	West Virginia Department Of Transportation	126 Rays Siding Road	Waiteville	Unknown	X	X						
Highways	West Virginia Department Of Transportation	156 Center Street	KEYSER	Unknown		X		X				X
Highways	West Virginia Department Of Transportation	174 North Washington Street	Berkeley Springs	Unknown				X				X
Highways	West Virginia Department Of Transportation	2460 US 60	Ona	Unknown								X
Highways	West Virginia Department of Transportation	5205 Husky Highway	Mannington	Unknown								X
Highways	West Virginia Department Of Transportation	607 Court Avenue	Moundsville	Unknown								X
Highways	West Virginia Department Of Transportation Highways Division	83 Brushy Fork Crossing	BUCKHANNON	Unknown								X
Highways	West Virginia Division of Highways	255 Depot Street	Weston	Unknown	X	X		X				X
Highways	West Virginia Division of Highways	4476 Triplett Ridge Road	Clay	Unknown								
Highways	West Virginia Transportation	2702 Jackson Avenue	Point Pleasant	Unknown				X				X
Highways	WEST/EAST BOUND I-64 W S	5137 I-64 WEST BOUND	HURRICANE	Owned								X
Highways	WETZEL COUNTY HQ	180 N. STATE ROUTE 2	MARTINSVILLE	Owned								X
Highways	Wheeling Transportation Department	566 Woodland Acres Road	Wheeling	Unknown				X				X
Homeland Security and Emergency Management	OFFICE	4774 CHIMNEY DRIVE	CHARLESTON	Owned		X		X				X
Insurance Commissioner	BECKLEY FO	109 EAST MAIN STREET	BECKLEY	Owned								X
Insurance Commissioner	CONSUMER ADVOCACY DIVISION	1 PLAYERS CLUB DRIVE	CHARLESTON	Owned								X
Insurance Commissioner	MARTINSBURG FO	115-22 EDWIN MILLER BLVD	MARTINSBURG	Owned					X			X
Insurance Commissioner	WHEELING FO	80 12TH STREET	WHEELING	Owned				X				X
Investment Management Board	UNITED CENTER-INVESTMENT MANAGEMENT BOARD	500 VIRGINIA STREET EAST	CHARLESTON	Leased		X						X
Joint Committee on Government and Finance	SPECIAL INVESTIGATIONS	301 EAGLE MOUNTAIN RD	CHARLESTON	Owned				X				X



Department/ Agency	Facility	Address	City	Owned vs. Leased	1% Flood	0.2% Flood	Levee Failure	Wildfire	Subsidence	Rad. Incidents	Landslide	Hazmat
Justice and Community Services	OFFICE	1204 KANAWHA BLVD E	CHARLESTON	Leased		X		X				X
Juvenile Services	BROOKE/HANCOCK YRC	3551 1/2 MAIN ST	WEIRTON	Leased								X
Juvenile Services	CABELL CYRC STORAGE	5900 GUYAN RIVER ROAD	BARBOURSVILLE	Owned	X	X						X
Juvenile Services	CENTRAL OFFICE	1200 QUARRIER ST.	CHARLESTON	Leased		X		X				X
Juvenile Services	FAYETTE COUNTY YRC	140 SCHOOL STREET	OAK HILL	Leased				X				X
Juvenile Services	GENE SPADARO JUVENILE CENTER	106 MARTIN DRIVE	MT. HOPE	Owned				X				
Juvenile Services	GREENBRIER CTY YRC	316 MAPLEWOOD AVENUE	LEWISBURG	Leased				X	X			X
Juvenile Services	HARRISON COUNTY YRC	408 EB Saunders Way	CLARKSBURG	Leased		X		X				X
Juvenile Services	JEFFERSON COUNTY YRC	1186 NO MILDRED STREET	RANSON	Owned					X			X
Juvenile Services	JM CHICK BUCKBEE CNT	1 JERRY LANE	AUGUSTA	Leased				X				X
Juvenile Services	KANAWHA CTY YRC	515 CENTRAL AVENUE	CHARLESTON	Leased		X						X
Juvenile Services	Kenneth ""Honey"" Rubenstein Juvenile Center	141 FORESTRY CAMP ROAD	DAVIS	Owned								X
Juvenile Services	LORRIE YEAGER JC	907 MISSION DRIVE	PARKERSBURG	Owned				X				X
Juvenile Services	MARION CTY YRC	1385 LOCUST AVE	FAIRMONT	Leased				X				X
Juvenile Services	MASON JACKSON YRC	1 WALDEN ROUSH WAY	PT PLEASANT	Leased								X
Juvenile Services	MERCER CYRC	901 SHELTER ROAD	PRINCETON	Owned				X				X
Juvenile Services	PUTNAM CYRC	3266 WINFIELD ROAD	WINFIELD	Leased				X				X
Juvenile Services	RALEIGH CTY YRC	113 RANDOLPH STREET	BECKLEY	Leased								X
Juvenile Services	SPJC /EDUCATION BLDG	843 SHELTER ROAD	PRINCETON	Owned				X				X
Juvenile Services	STARS YRC	1014 SO. RALEIGH STREET	MARTINSBURG	Leased					X			X
Juvenile Services	TRI-COUNTY YRC	467 MAIN STREET	MADISON	Owned				X				X
Juvenile Services	WAYNE CYRC	11125 RT 52	WAYNE	Owned	X	X		X				
Juvenile Services	WETZEL CO YRC	101 S. 4TH AVE SUITE 500	PADEN CITY	Leased								X
Labor	BUILDING 3	STATE CAPITOL COMPLEX	CHARLESTON, WV	Owned								X
Library Commission	CLARKSBURG LIBRARY	404 W. PIKE ST.	CLARKSBURG	Leased				X				X
Library Commission	RALEIGH CTY. LIBRARY	221 N. KANAWHA ST.	BECKLEY	Leased								X
Lottery Commission	BACKUP DATA CENTER	64 STERLING DRIVE	BRIDGEPORT	Leased								X
Lottery Commission	CITY CENTER OFFICES WEST	900 PENNSYLVANIA AVE	CHARLESTON	Owned		X						X
Lottery Commission	WEIRTON OFFICE BUILD	100 MUNICIPAL PLAZA	WEIRTON	Leased								X
Marshall University	UNIVERSITY	1 JOHN MARSHALL DR	HUNTINGTON	Owned			Y					X
Military Affairs	WVI/FC	1700 MACCORKLE AVE SE	CHARLESTON	Leased		X						X
Miner's Health Safety	BELL ROAD	830 BELL ROAD	CHAPMANVILLE	Owned				X				X
Miner's Health Safety	FIELD OFFICE	205 MARION SQUARE	FAIRMONT	Leased				X				X
Miner's Health Safety	FIELD OFFICE	425 LICK CREEK ROAD	DANVILLE	Leased	X	X		X				X
Miner's Health Safety	Oak Hill Regional Office - Region 4	337 INDUSTRIAL DRIVE	OAK HILL	Owned				X			X	X
Miner's Health Safety	Welch Regional Office - Region 2	830 VIRGINIA AVENUE	WELCH	Leased								X
Miner's Health Safety	WV Training Conference Center	431 RUNNING RIGHT WAY	JULIAN	Owned				X				
Motor Vehicles	BECKLEY BRANCH OFFIC	107 PINECREST DRIVE	BECKLEY	Leased								X



Department/ Agency	Facility	Address	City	Owned vs. Leased	1% Flood	0.2% Flood	Levee Failure	Wildfire	Subsidence	Rad. Incidents	Landslide	Hazmat
Motor Vehicles	CHARLES TOWN REGIONA	24 RULAND ROAD	KEARNEYSVILLE	Owned					X			X
Motor Vehicles	CLARKSBURG OFFICE	151 WEST MAIN ST	CLARKSBURG	Owned								X
Motor Vehicles	DMV KC SERVICE CTR	5707 MACCORKLE AVE SE	CHARLESTON	Owned								X
Motor Vehicles	DMV WAREHOUSE - 1317	1317 HANSFORD STREET	CHARLESTON	Owned		X						X
Motor Vehicles	DMV WAREHOUSE - 1321	1321 HANSFORD STREET	CHARLESTON	Owned		X						X
Motor Vehicles	ELKINS REGIONAL DMV	1029 N. RANDOLPH AVE	ELKINS	Owned				X				X
Motor Vehicles	FAIRMONT OFFICES	416 ADAMS ST	FAIRMONT	Leased								X
Motor Vehicles	FLATWOODS DMV	295 SKIDMORE LANE	SUTTON	Owned				X				
Motor Vehicles	FRANKLIN DMV	100 Thorn Creek Road	FRANKLIN	Owned					X			
Motor Vehicles	KANAWHA CITY REGIONA	140 KANAWHA MALL	CHARLESTON	Owned		X						X
Motor Vehicles	KEYSER BRANCH OFFICE	196 N TORNADO WAY ST 8	KEYSER	Owned				X				X
Motor Vehicles	LEWISBURG DMV	115 MAPLEWOOD AVENUE	LEWISBURG	Owned				X	X			X
Motor Vehicles	LOGAN REGIONAL OFFIC	428 MAIN STREET	LOGAN	Owned				X				X
Motor Vehicles	MARTINSBURG REG. OFF	1438 EDWIN MILLER BL	MARTINSBURG	Owned					X			X
Motor Vehicles	MOOREFIELD REG. DMV	410 SOUTH MAIN ST.	MOOREFIELD	Owned			Y	X				X
Motor Vehicles	MORGANTOWN REG. DMV	1525 DECKERS CREEK BLVD.	MORGANTOWN	Owned								X
Motor Vehicles	PRINCETON REGIONAL	198 DAVIS STREET	PRINCETON	Owned		X						X
Motor Vehicles	SPENCER DMV	115 CHURCH STREET	SPENCER	Owned				X				X
Motor Vehicles	WELCH DMV	92 MCDOWELL STREET	WELCH	Owned	X	X		X				X
Motor Vehicles	WILLIAMSON DMV	225 3RD AVENUE	WILLIAMSON	Owned		X	Y	X				X
Mountain State ESC	MOUNTAIN STATE OFFIC	501 22ND STREET	DUNBAR	Owned				X				X
Mountwest Community and Technical College	CABELL HALL	1 MOUNTWEST WAY	HUNTINGTON	Leased				X				X
National Coal Heritage Area Authority	814 MAIN STREET	814 MAIN STREET	MT. HOPE	Owned				X				X
National Coal Heritage Area Authority	DEPOT VISITOR CENTER	100 SIMMONS AVENUE	BRAMWELL	Owned				X				X
National Coal Heritage Area Authority	OFFICE	100 KELLY AVENUE	OAK HILL	Leased				X				X
Natural Resources	04 316 OFF/STORAGE	415 MCCUE ROAD	SUMMERSVILLE	Owned				X				X
Natural Resources	2704 WATER PLANT	1988 SPRING RUN RD; UNIT	DORCAS	Owned				X				
Natural Resources	APPLE GROVE HATCHERY	743 Hatchery Ln	GALLIPOLIS FERRY	Owned								X
Natural Resources	CHIEF LOGAN LAW OFFI	376 LITTLE BUFFALO CK RD	LOGAN	Leased								X
Natural Resources	CLW WILDLIFE CENTER	301 FORKS OF COAL WAY	ALUM CREEK	Owned								X
Natural Resources	D1 OFFICE	1110 RAILROAD STREET	FARMINGTON	Owned	X	X		X				X
Natural Resources	D1 STORAGE-LAW/WILD	1113 RAILROAD ST	FARMINGTON	Owned				X				X
Natural Resources	D5 FOC STORAGE WARE	501 ROCKY BRANCH ROAD	ALUM CREEK	Owned								X
Natural Resources	DNR DISTRICT 3 OFFICE	163 WILDLIFE ROAD	FRENCH CREEK	Leased								X
Natural Resources	DNR DISTRICT 5 OFFICE	50 ROCKY BRANCH ROAD	ALUM CREEK	Owned								X
Natural Resources	DNR HQ OFFICE	324 FOURTH AVENUE	SOUTH CHARLESTON	Owned		X						X
Natural Resources	DWWM Parkersburg Field Office	2311 OHIO AVENUE	PARKERSBURG	Owned			Y	X				X



Department/ Agency	Facility	Address	City	Owned vs. Leased	1% Flood	0.2% Flood	Levee Failure	Wildfire	Subsidence	Rad. Incidents	Landslide	Hazmat
Natural Resources	ELK RIVER STOR BLDG.	1789 AIRPORT RD.	SUTTON	Owned								X
Natural Resources	LOCK #20-BELLEVILLE	565 RIVE LANE	BELLEVILLE	Owned	X	X		X				X
Natural Resources	MCCLINTIC SHOOTING R	1163 WILDLIFE ROAD	POINT PLEASANT	Owned								
Natural Resources	PANTHER SHOOTING RAN	2349 PANTHER CREEK ROAD	PANTHER	Owned	X	X						
Natural Resources	PENDLETON CC BLDG	200 CONFEDERATE RD	FRANKLIN	Owned	X	X		X				X
Natural Resources	WINFIELD COURT DOCK	21 SECOND STREET	WINFIELD	Owned	X	X		X				X
New River Community and Technical College	COLLEGE	301 COURTNEY DRIVE	LEWISBURG	Owned					X			X
New River Community and Technical College	GHENT CAMPUS	527 ODD ROAD	GHENT	Owned				X				X
New River Community and Technical College	MERCER CO CAMPUS	1001 MERCER STREET	PRINCETON	Leased								X
New River Community and Technical College	MODULAR OFFICES	6101 WEBSTER ROAD	SUMMERSVILLE	Leased								X
Northern Community and Technical College	CAMPUS	1704 MARKET STREET	WHEELING	Owned	X	X						X
Parks	ASST SUPERINTENDENT	384 CACAPON LODGE DRIVE	BERKELEY SPRINGS	Owned					X			X
Parks	ASST. SUPT. RESIDENC	63 PICKENS GRADE ROAD	HACKER VALLEY	Owned								X
Parks	Audra State Park Rd	8397 Audra Park Road	Buckhannon	Unknown				X				X
Parks	Babcock State Park	486 Babcock Road	Clifftop	Unknown				X				X
Parks	BATHHOUSE & REC HALL	274 BEACH LANE	BERKELEY SPRINGS	Owned								X
Parks	BATT PICNIC SHELTER	130 BATT LANE	BERKELEY SPRINGS	Owned				X				X
Parks	Beartown State Park	4800 Watoga Park Road	Marlinton	Unknown								
Parks	Beech Fork Campground	5601 LONG BRANCH ROAD	BARBOURSVILLE	Owned	X	X						
Parks	Beech Fork State Park	5601 Long Branch Road	Barboursville	Unknown	X	X						
Parks	Berkeley Springs State Park	2 S. Washington Street	Berkeley Springs	Unknown				X				X
Parks	Blackwater Falls State Park	1584 Blackwater Lodge Road	Davis	Unknown								
Parks	BLDG MAINT PARTS BLD	260 SUPERINTENDENT LANE	BERKELEY SPRINGS	Owned				X				
Parks	Blennerhassett Island Historical State Park	137 Juliana Street	Parkersburg	Unknown			Y					X
Parks	Bluestone State Park	2104 Bluestonbe Park Road	Hinton	Unknown								
Parks	BOAT DOCK BLDG	122 BOAT DOCK LANE	BERKELEY SPRINGS	Owned	X	X			X			X
Parks	BOAT DOCK/SHELTER	68 BOAT DOCK LANE	BERKELEY SPRINGS	Owned					X			X
Parks	CABINS/BATHHOUSE/STORAGE	2 MI. SW OFF WV 32	DAVIS	Owned				X	X			X
Parks	CABINS/CAMPSITE	790 CABIN SOUTH LANE	BERKELEY SPRINGS	Owned				X				
Parks	Cacapon Resort State Park	818 Cacapon Lodge Drive	Berkeley Springs	Unknown					X			X
Parks	Camp Creek State Park and Forest	2390 Camp Creek Road	Camp Creek	Unknown								
Parks	CAMPGROUND/PICNIC/STORAGE/OFFICES	4 MI. EAST OFF WV 31	CAIRO	Owned								X
Parks	Canaan Valley Resort State Park	230 Main Lodge Road	Davis	Unknown					X			
Parks	Carnifex Ferry Battlefield State Park	1194 Carnifex Ferry Road	Summersville	Unknown								
Parks	Cass Scenic Railroad State Park	12363 Cass Road	Cass	Unknown				X				X
Parks	Cathedral State Park	12 Cathedral Park Drive	Aurora	Unknown								X



Department/ Agency	Facility	Address	City	Owned vs. Leased	1% Flood	0.2% Flood	Levee Failure	Wildfire	Subsidence	Rad. Incidents	Landslide	Hazmat
Parks	Cedar Creek State Park	2947 Cedar Creek Road	Glenville	Unknown								
Parks	CHEIF LOGAN LODGE	1000 CONFERENCE CENTER D	LOGAN	Owned								
Parks	Chief Logan State Park	1000 Conference Center Drive	Logan	Unknown								
Parks	DAVIS CENTER TANK	1 JUSTICE LANE	DAVIS	Owned								
Parks	Droop Mountain Battlefield State Park	683 Droop Park Road	Hillsboro	Unknown								X
Parks	ENTRANCE BUILDING	18 CACAPON LODGE DRIVE	BERKELEY SPRINGS	Owned	X	X						X
Parks	EVENT SHELTER	202 NORTH BEND SP RD	CAIRO	Owned	X	X						X
Parks	Fairfax Stone State Park	1584 Blackwater Lodge Road	Davis	Unknown								
Parks	GOLF IRRIGATION	451 CABIN NORTH LANE	BERKELEY SPRINGS	Owned				X				X
Parks	GOLF MAINT BLDG	201 SUPERINTENDENT LANE	BERKELEY SPRINGS	Owned				X				
Parks	Hawks Nest State Park	49 Hawks Nest Park Drive	Ansted	Unknown								X
Parks	HINTON CAMPSITE/OFFICES	2 MI. S. OFF WV 20	HINTON	Owned				X				X
Parks	Holly River State Park	680 State Park Road	Hacker Valley	Unknown	X	X						
Parks	INN	422 CACAPON LODGE DRIVE	BERKELEY SPRINGS	Owned					X			X
Parks	LITTLE BEAVER PICNIC AREA	1402 GRANDVIEW RD	BEAVER	Owned								X
Parks	Little Beaver State Park	1402 Grandview Road	Beaver	Unknown								X
Parks	LODGE & UP TRAM STN	49 HAWKS NEST PARK DRIVE	ANSTED	Owned								X
Parks	LODGE EXP CONF CTR	818 CACAPON LODGE DRIVE	BERKELEY SPRINGS	Owned					X			X
Parks	Lost River State Park	321 Park Drive	Mathias	Unknown								
Parks	MANSION & MUSEUM	1 MAIN STREET	POINT PLEASANT	Unknown			Y	X				X
Parks	Moncover Lake State Park	695 Moncover Lake Access Road	Gap Mills	Unknown					X			
Parks	North Bend State Park	202 North Bend State Park Road	Cairo	Unknown	X	X						X
Parks	OFFICE & GARAGE	5 MILES NORTH OF PAX	PLUM ORCHARD	Owned				X				X
Parks	OFFICE & MUSEUM	137 JULIANA STREET	PARKERSBURG	Owned			Y					X
Parks	OLD ROMAN BATHHOUSE	2 SOUTH WASHINGTON ST.	BERKELEY SPRINGS	Owned				X				X
Parks	PARK OFFICE	2947 Cedar Creek Road	GLENVILLE	Owned								
Parks	PICNIC AREA/CABINS	5 MI. SOUTH OFF US 50	GRAFTON	Owned				X				X
Parks	Pinnacle Rock State Park	6407 Coal Heritage Road	Bramwell	Unknown								X
Parks	PIPESTEM CAMPGROUND	3405 PIPESTEM DRIVE	PIPESTEM	Owned								X
Parks	Pipestem Resort State Park	3405 Pipestem Drive	Pipestem	Unknown								X
Parks	Pricketts Fort State Park	88 State Park Road	Fairmont	Unknown								X
Parks	PRO SHOP	332 CLUB HOUSE LANE	BERKELEY SPRINGS	Owned					X			X
Parks	RANGERS RESIDENCE	268 SUPERINTENDENT LANE	BERKELEY SPRINGS	Owned				X				
Parks	RESTROOM BOATDOCK	50 BOAT DOCK LANE	BERKELEY SPRINGS	Owned					X			X
Parks	SEWAGE CONTROL BLDG	102 CACAPON LODGE DRIVE	BERKELEY SPRINGS	Owned				X				X
Parks	STABLES	251 SUPERINTENDENT LANE	BERKELEY SPRINGS	Owned				X				
Parks	STATE PARK OFFICE/CAMP AREA	149 STATE PARK TRAIL	ROANOKE	Owned								X
Parks	Stonewall Resort State Park	940 Resort Drive	Roanoke	Unknown								
Parks	STORAGE TANK	551 CABIN NORTH LANE	BERKLEY SPRINGS	Owned				X				X



Department/ Agency	Facility	Address	City	Owned vs. Leased	1% Flood	0.2% Flood	Levee Failure	Wildfire	Subsidence	Rad. Incidents	Landslide	Hazmat
Parks	SUPERINTENDENT RES	88 SUPERINTENDENT LANE	BERKELEY SPRINGS	Owned				X				
Parks	SUPPLY BLDG	292 SUPERINTENDENT LANE	BERKELEY SPRINGS	Owned				X				
Parks	TENNIS STATION BLDG	481 CACAPON LODGE DRIVE	BERKELEY SPRINGS	Owned				X				X
Parks	TICKET BOOTH	2ND STREET	PARKERSBURG	Owned	X	X	Y	X				X
Parks	Tomlinson Run State Park	84 Osage Road	New Manchester	Unknown						X		X
Parks	Tu-Endie-Wei State Park	1 Main Street	Point Pleasant	Unknown			Y	X				X
Parks	Tygart Lake State Park	1240 Paul E Malone Road	Grafton	Unknown	X	X						
Parks	Valley Falls State Park	720 Valley Falls Road	Fairmont	Unknown								X
Parks	WATER TREATMENT PLAN	511 CABIN NORTH LANE	BERKLEY SPRINGS	Owned				X				X
Parks	Watoga State Park	4800 Watoga Park Road	Marlinton	Unknown								
Parks	Watters Smith Memorial State Park	831 RR 3, Duck Creek Road	Lost Creek	Unknown				X				
Parkways Authority	BCKLY MNT/STATE POLI	201 PIKEVIEW DR.	BECKLEY	Owned								X
Parkways Authority	BECKLEY CUST SERVICE	12 PIKEVIEW DRIVE	BECKLEY	Owned								X
Parkways Authority	BECKLEY S ADMIN BLDG	324 GEORGE ST	BECKLEY	Owned				X				X
Parkways Authority	BECKLEY SOUTH STORAG	374 GEORGE ST.	BECKLEY	Owned				X				X
Parkways Authority	BLUESTONE TRVL PLAZA	I-77/MP18 NB	BLUESTONE	Owned								X
Parkways Authority	DOT-PARKWAY AUTHORITY	3310 PIEDMONT ROAD	CHARLESTON	Owned		X						X
Parkways Authority	GENERATOR GAS MECH	265 NEPTUNE DR	BECKLEY	Owned								X
Parkways Authority	GENRATR CHELYAN MAIN	182 SLAUGHTERS CREEK	CABIN CREEK	Owned	X	X						X
Parkways Authority	MORTON HMS STRG #2	I-77 NB MM 72	GALLAGHER	Owned								X
Parkways Authority	PRINCETON ST POLICE	297 AMBROSE LANE	PRINCETON	Owned				X				X
Parkways Authority	REED EQUIP. STORAGE	145 RIVER LANE DR	CHARLESTON	Owned		X						X
Parkways Authority	REST AREA 69 WTR TRT	I-77	WHITTAKER	Owned				X				X
Parkways Authority	SIGN SHOP EQUIP STRG	322 GEORGE ST	BECKLEY	Owned				X				X
Parkways Authority	STANDARD FUEL CANOPY	6951 PAINT CREEK ROAD	STANDARD	Owned								X
Parkways Authority	TAMARACK	1 TAMARACK PARK	BECKLEY	Owned				X				X
Parkways Authority	VIETNAM VET MEMORIAL	I-77 & RT. 460 INTERCHGE	PRINCETON	Owned								X
Parkways Authority	WAREHOUSE - TAMARACK	584 RAGLAND RD	BECKLEY	Leased				X				
Pierpont Community and Technical College	GASTON CAPERTON CENT	501 WEST MAIN STREET	CLARKSBURG	Owned								X
Pierpont Community and Technical College	NAEC	1050 E. BENEDUM INDUSTRI	BRIDGEPORT	Leased								X
Pierpont Community and Technical College	PIERPONT AT MTEC	1000 MISSISSIPPI STREET	MORGANTOWN	Owned								X
Pierpont Community and Technical College	VET TECH FACILITY	211 SOUTH CHESTNUT ST.	CLARKSBURG	Owned								X
Public Employees Grievance Board	CHARLESTON OFFICE	1701 5TH AVENUE SUITE 2	CHARLESTON	Leased		X						X
Public Service Commission	Administrative Division	201 BROOKS STREET	CHARLESTON	Owned		X						X
Public Service Commission	PSC ANNEX BLDG	1116 QUARRIER STREET	CHARLESTON	Owned		X						X
Rail Authority	STATE RAIL AUTHORITY	120 WATER PLANT DRIVE	MOOREFIELD	Owned								X



Department/ Agency	Facility	Address	City	Owned vs. Leased	1% Flood	0.2% Flood	Levee Failure	Wildfire	Subsidence	Rad. Incidents	Landslide	Hazmat
Real Estate Commission	REAL ESTATE COMMISSION	300 CAPITOL ST. STE 400	CHARLESTON	Leased		X						X
Regional Jail and Corr. Fac. Authority	NORTH CENTRAL REGION	1 LOIS LANE DRIVE	GREENWOOD	Owned				X				X
Regional Jail and Corr. Fac. Authority	POTOMAC HIGH REG JAI	13 DOLAN DRIVE	AUGUSTA	Owned								
Regional Jail and Corr. Fac. Authority	SOUTH CENTRAL JAIL	1001 CENTRE WAY	CHARLESTON	Owned				X				
Regional Jail and Corr. Fac. Authority	TYGART VALLEY REGIONAL JAIL	400 ABBEY ROAD	BELINGTON	Owned				X				X
Regional Jail and Corr. Fac. Authority	WESTERN REGIONAL JAI	1 O'HANLON PLACE	BARBOURSVILLE	Owned								X
Rehabilitation Services Division of Commerce	BECKLEY DISTRICT	800 NEW RIVER TOWN ROAD	BECKLEY	Owned								X
Rehabilitation Services Division of Commerce	CABELL HIGH (OFFICE)	2300 RT 60 E.	ONA	Owned		X		X				X
Rehabilitation Services Division of Commerce	CHARLESTON DDS	500 QUARRIER ST. 500	CHARLESTON	Owned		X						X
Rehabilitation Services Division of Commerce	CHARLESTON DISTRICT	4701 MACORKLE AVE SE	CHARLESTON	Owned				X				
Rehabilitation Services Division of Commerce	CLARKSBURG DDS	320 W. PIKE STREET	CLARKSBURG	Owned								X
Rehabilitation Services Division of Commerce	CLARKSBURG REGIONAL OFFICE	153 WEST MAIN ST.	CLARKSBURG	Owned				X				X
Rehabilitation Services Division of Commerce	ELKINS BRANCH	1025 N RANDOLPH AVE	ELKINS	Owned				X				X
Rehabilitation Services Division of Commerce	HUNTINGTON HIGH OFF	1 HIGHLANDER WAY	HUNTINGTON	Owned				X				X
Rehabilitation Services Division of Commerce	HURRICANE OFFICE	3554 TEAYS VALLEY RD #20	HURRICANE	Leased				X				X
Rehabilitation Services Division of Commerce	KEYSER BRANCH	67 NORTH TORNADO WAY	KEYSER	Owned				X				X
Rehabilitation Services Division of Commerce	LEWISBURG DISTRICT	777 NORTH JEFFERSON ST.	LEWISBURG	Owned				X	X			X
Rehabilitation Services Division of Commerce	MARTINSBURG DISTRICT	489 MIDATLANTIC PARKWAY	MARTINSBURG	Owned					X			X
Rehabilitation Services Division of Commerce	MORGANTOWN BRANCH	1415 EARL CORE ROAD	MORGANTOWN	Owned	X	X						X
Rehabilitation Services Division of Commerce	MULLENS BRANCH	316 HOWARD STREET	MULLENS	Unknown	X	X		X				X
Rehabilitation Services Division of Commerce	PARKERSBURG HIGH OFF	1511 BUZZARD DRIVE	PARKERSBURG	Owned	X	X	Y	X				X
Rehabilitation Services Division of Commerce	PT. PLEASANT BRANCH	207 FIFTH STREET	PT. PLEASANT	Owned			Y	X				X
Rehabilitation Services Division of Commerce	REHABILITATION PROGRAM	10 MCJUNKIN ROAD	NITRO	Owned		X						X
Rehabilitation Services Division of Commerce	ROMNEY BRANCH	24939 NW PIKE	ROMNEY	Owned								X
Rehabilitation Services Division of Commerce	SOUTHERN C. COLLEGE	1601 ARMORY DRIVE	WILLIAMSON	Leased			Y	X				X
Rehabilitation Services Division of Commerce	SPENCER BRANCH	319 MARKET STREET	SPENCER	Owned				X				X



Department/ Agency	Facility	Address	City	Owned vs. Leased	1% Flood	0.2% Flood	Levee Failure	Wildfire	Subsidence	Rad. Incidents	Landslide	Hazmat
Rehabilitation Services Division of Commerce	SUMMERSVILLE BRANCH	830 NORTH SIDE DR S27	SUMMERSVILLE	Owned								
Rehabilitation Services Division of Commerce	TEAYS VALLEY LIB. SQ	115 LIBERTY SQUARE	HURRICANE	Owned								X
Rehabilitation Services Division of Commerce	WESTON BRANCH	306 MARKET PLACE MALL	WESTON	Owned								X
Rehabilitation Services Division of Commerce	WHEELING BRANCH	1324 CHAPLINE ST STE 200	WHEELING	Leased				X				X
Rehabilitation Services Division of Commerce	WVDRS ADMIN FLOOR 1	107 CAPITOL STREET	CHARLESTON	Leased		X		X				X
Rehabilitation Services Division of Commerce	WVDRS ADMIN FLOOR 6	109 CAPITOL ST SUITE 600	CHARLESTON	Leased		X		X				X
Robert C Byrd Clinic	ROBERT C BYRD CLINIC	1464 NORTH JEFFERSON STRE	LEWISBURG	Leased				X	X			X
School Building Authority	SBA OF WV	2300 KANAWHA BLVD. EAST	CHARLESTON	Owned				X				X
School of Osteopathic Medicine	CAMC MEM.HOSP.WVU BG	3110 MACCORKLE AVE. SE	CHARLESTON	Leased		X						X
School of Osteopathic Medicine	DAVIS MED. CTR.	801 GORMAN AVE.	ELKINS	Leased			Y	X				X
School of Osteopathic Medicine	ERMA BYRD HIGHER ED.	300 UNIVERITY DRIVE	BEAVER	Leased				X				
School of Osteopathic Medicine	GRANT MEMORIAL HOSP.	117HOSPITAL DR.	PETERSBURG	Owned				X				X
School of Osteopathic Medicine	LOGAN REGIONAL HOPS.	20 HOSPITAL DRIVE	LOGAN	Leased								X
School of Osteopathic Medicine	LOT GOWING PROPERTY	400 N LEE STREET	LEWISBURG	Owned				X	X			X
School of Osteopathic Medicine	MAXWELL CENTER	32 20TH. STREET	WHEELING	Leased								X
School of Osteopathic Medicine	OFFICE	405 CAPITOL ST. STE 402	CHARLESTON	Leased		X						X
School of Osteopathic Medicine	PARKERSBURG OFF.BLDG	936 MARKET STREET	PARKERSBURG	Leased				X				X
School of Osteopathic Medicine	PRINCETON COMM.HOSP	122 12TH. STREET	PRINCETON	Owned				X				X
School of Osteopathic Medicine	RALEIGH GENERAL HOSP	1710 HARPER ROAD	RALEIGH	Leased								X
School of Osteopathic Medicine	ST. MARY'S MED. CTR.	2900 1ST. AVE.	HUNTINGTON	Leased			Y					X
School of Osteopathic Medicine	THOMAS MEMORIAL HOSP	4605 MACCORKLE AVE.SW	SOUT CHARLESTON	Leased				X				X
School of Osteopathic Medicine	WVU HEALTH SCI. CTR.	2500 FOUNDATION WAY	MARTINSBURG	Leased					X			X
Schools for the Deaf and the Blind	WV SCHOOL FOR DEAF AND BLIND	301 EAST MAIN STREET	ROMNEY	Owned								X
Senior Services	CHARLESTON TOWN CENT	3003 TOWN CENTER MALL	CHARLESTON	Owned				X				X
Senior Services	ROSE PLAZA	21 MIDDLETOWN ROAD	FAIRMONT	Owned								X
Shepherd University	UNIVERSITY	301 N KING STREET	SHEPHERDSTOWN	Owned					X			X
Southern Educational Services COOP	SESC	214 NORTH KANAWHA STREET	BECKLEY	Leased								X



Department/ Agency	Facility	Address	City	Owned vs. Leased	1% Flood	0.2% Flood	Levee Failure	Wildfire	Subsidence	Rad. Incidents	Landslide	Hazmat
Southern WV Community and Tech. College	ALLIED HEALTH & TECH	2900 DEMPSEY BRANCH ROAD	MOUNT GAY	Owned				X				
Southern WV Community and Tech. College	BOONE CAMPUS BLDG	3505 DANIEL BOONE PKY	DANVILLE	Owned				X				X
Southern WV Community and Tech. College	DISTRICT OFFICE	2900 DEMPSEY BRANCH ROAD	MOUNT GAY	Owned				X				
Speech Pathology and Audiology Examiners Board	OFFICE	99 EDMISTON WAY #214	BUCKHANNON	Leased				X				X
State Police	BCI BLUEFIELD	1008 ALBEMARLE STREET	BLUEFIELD	Leased				X	X			X
State Police	BCI BUCKHANNON	2442 ROUTE 20 SOUTH ROAD	BUCKHANNON	Owned				X				X
State Police	BCI FAIRMONT	37 RANDOM LANE	FAIRMONT	Leased	X	X		X				
State Police	BCI LOGAN	735 RIVERVIEW DRIVE	LOGAN	Leased	X	X		X				X
State Police	BCI MARTINSBURG	55 PERDIAN PKWY	MARTINSBURG	Leased					X			X
State Police	BCI-BECKLEY	305 RESERVOIR ROAD	BECKLEY	Owned								X
State Police	BECKLEY LOCAL	105 PINE CREST DRIVE	BECKLEY	Owned								X
State Police	BERKELEY SPRINGS	157 VALLEY ROAD	BERKELEY SPRINGS	Owned				X				X
State Police	CLAY DETACHMENT	5650 BIG OTTER HIGHWAY	IVYDALE	Owned								X
State Police	FAIRMONT DETACHMENT	320 LAFAYETTE STREET	FAIRMONT	Owned				X				X
State Police	FRANKLIN DETACHMENT	3 MI. E. ON ROUTE 33	FRANKLIN	Owned				X				X
State Police	HAMLIN DETACHMENT	8152 COURT AVENUE	HAMLIN	Owned				X				X
State Police	HUNTINGTON DETACHMEN	3339 US RT. 60	HUNTINGTON	Owned				X				X
State Police	JESSE DETACHMENT	7712 APPALACHIAN HIGHWAY	JESSE	Owned				X				X
State Police	KINGWOOD DETACHMENT	1101 SMOKEY LANE	KINGWOOD	Owned				X				X
State Police	LEWISBURG DETACHMENT	381 GREENBRIER ROAD	LEWISBURG	Leased				X	X			X
State Police	MADISON DETACHMENT	1 HUMAN SVC COMPLEX	DANVILLE	Leased								X
State Police	MARTINSBURG DETACHME	100 SHENANDOAH ROAD	MARTINSBURG	Owned					X			X
State Police	MASON COUNTY DET.	11344 OHIO RIVER ROAD	WEST COLUMBIA	Owned								X
State Police	MORGANTOWN DETACHMEN	3453 MONONGAHELA BLVD	MORGANTOWN	Owned								X
State Police	MORGANTOWN DETACMENT	11 COMMERCE DR	WESTOVER	Leased				X				X
State Police	MOUNDSVILLE DETACHME	1700 S. LAFAYETTE ST	MOUNDSVILLE	Owned								X
State Police	NEW CUMBERLAND DET.	20 ROCKY SIDE ROAD	NEW CUMBERLAND	Owned				X				X
State Police	PRINCETON DETACHMENT	1120 OAKVALE RD.	PRINCETON	Owned								X
State Police	PROCUREMENT	4124 KANAWHA TURNPIK	SOUTH CHARLESTON	Owned				X				X
State Police	RICHWOOD DETACHMENT	12 WHITE AVE.	RICHWOOD	Leased		X						X
State Police	ROMNEY DETACHMENT	525 DEPOT STREET	ROMNEY	Owned				X				X
State Police	SPENCER DETACHMENT	100 TRIPLETT DR.	SPENCER	Owned				X				X
State Police	ST. MARYS DETACHMENT	1313 2ND STREET	ST. MARYS	Owned				X				X
State Police	STATE POLICE OFFICE	135 ACADEMY DRIVE	INSTITUTE	Owned				X				X
State Police	SUTTON DETACHMENT	301 DAYS DRIVE	SUTTON	Owned				X				X
State Police	TROOP 3 GARAGE	5190 BEVERLY PIKE	BEVERLY	Owned				X				X
State Police	TROOP 5 HQ/LOGAN DET	8040 OLD LOGAN ROAD	LOGAN	Owned				X				X



Department/ Agency	Facility	Address	City	Owned vs. Leased	1% Flood	0.2% Flood	Levee Failure	Wildfire	Subsidence	Rad. Incidents	Landslide	Hazmat
State Police	UNION DETACHMENT	55 MIDDLE STREET	UNION	Owned				X	X			X
State Police	Wardensville Police Department	25 Warrior Way	Wardensville	Unknown								X
State Police	WAYNE DETACHMENT	300 SANSOM AVENUE	WAYNE	Owned				X				X
State Police	WEBSTER SPRINGS DET.	5525 WEBSTER ROAD	UPPERGLADE	Owned								X
State Police	WEST UNION DETACH	2 LOIS LANE DRIVE	GREENWOOD	Owned				X				X
State Police	West Union Police Department	300 Court Street	West Union	Unknown				X				X
State Police	West Virginia Division Of Natural Resources Special Conservation Officers - Beech	5601 Long Branch Road	BARBOURSVILLE	Unknown	X	X						
State Police	West Virginia State Police Department Headquarters	725 Jefferson Road	SOUTH CHARLESTON	Unknown								X
State Police	West Virginia State Police Troop 1 - Fairmont Detachment	1083 Country Club Road	Fairmont	Unknown				X	X			X
State Police	West Virginia State Police Troop 1 - Hundred Detachment	58 Four Seasons Drive	Hundred	Unknown	X	X		X				X
State Police	West Virginia State Police Troop 1 - Morgantown Detachment	3453 Monongahela Boulevard, 100	Morgantown	Unknown								X
State Police	West Virginia State Police Troop 1 - Moundsville Detachment	1700 Lafayette Avenue	Moundsville	Unknown								X
State Police	West Virginia State Police Troop 1 - New Cumberland Detachment	32 County Highway 66/1	New Cumberland	Unknown				X				X
State Police	West Virginia State Police Troop 1 - Wellsburg Detachment	1315 Commerce Street	Wellsburg	Unknown	X	X		X				X
State Police	West Virginia State Police Troop 1 - Wheeling Detachment	2600 Eoff Street	Wheeling	Unknown								X
State Police	West Virginia State Police Troop 2 - Berkeley Springs Detachment	1750 Valley Road	BERKELEY SPRINGS	Unknown				X				X
State Police	West Virginia State Police Troop 2 - Headquarters	409 Industrial Boulevard	KEARNEYSVILLE	Unknown					X			
State Police	West Virginia State Police Troop 2 - Martinsburg Detachment	14 Trooper Drive	Martinsburg	Unknown					X			X
State Police	West Virginia State Police Troop 2 - Moorefield Detachment	5153 U.S.220	Moorefield	Unknown			Y	X				X
State Police	West Virginia State Police Troop 2 - Romney Detachment	525 Depot Street	Romney	Unknown				X				X
State Police	West Virginia State Police Troop 3 - Buckhannon Detachment	1 Bu Drive	Buckhannon	Unknown				X				X
State Police	West Virginia State Police Troop 3 - Franklin Detachment	5190 Beverly Pike	Beverly	Unknown				X				X
State Police	West Virginia State Police Troop 3 - Glenville Detachment	4640 West Virginia 5	GLENVILLE	Unknown		X		X				X
State Police	West Virginia State Police Troop 3 - Headquarters	1300 Harrison Avenue	Elkins	Unknown				X				X
State Police	West Virginia State Police Troop 3 - Parsons Detachment	9105 Seneca Trail	Hambleton	Unknown				X				X
State Police	West Virginia State Police Troop 3 - Sutton Detachment	302 Days Drive	Sutton	Unknown				X				X
State Police	West Virginia State Police Troop 3 - Webster Springs	5525 Webster Road	Upperglade	Unknown								X



Department/ Agency	Facility	Address	City	Owned vs. Leased	1% Flood	0.2% Flood	Levee Failure	Wildfire	Subsidence	Rad. Incidents	Landslide	Hazmat
State Police	West Virginia State Police Troop 3 - Weston Detachment	86 Gladly Fork Road	Weston	Unknown	X	X						X
State Police	West Virginia State Police Troop 4 - Clay Detachment	882 Wallback Road	Maysel	Unknown				X				X
State Police	West Virginia State Police Troop 4 - Grantsville Detachment	2400 South Calhoun Highway	Millstone	Unknown								X
State Police	West Virginia State Police Troop 4 - Harrisville Detachment	West Virginia 16	Harrisville	Unknown								
State Police	West Virginia State Police Troop 4 - Parkersburg Detachment	3828 Staunton Turnpike	Parkersburg	Unknown				X				X
State Police	West Virginia State Police Troop 4 - Quincy Detachment	2700 East Dupont Avenue	Belle	Unknown								X
State Police	West Virginia State Police Troop 4 - Saint Marys Detachment	1313 2nd Street	St. Marys	Unknown				X				X
State Police	West Virginia State Police Troop 4 - South Charleston Detachment	711 Jefferson Road	Charleston	Unknown		X						X
State Police	West Virginia State Police Troop 4 - Spencer Detachment	100 Triplett Road	Spencer	Unknown				X				X
State Police	West Virginia State Police Troop 5 - Hamlin Detachment	8021 Court Avenue	Hamlin	Unknown				X				X
State Police	West Virginia State Police Troop 5 - Headquarters	735 Riverview Avenue	Logan	Unknown	X	X		X				X
State Police	West Virginia State Police Troop 5 - Logan Detachment	8040 County Route 119/90	CHAPMANVILLE	Unknown				X				X
State Police	West Virginia State Police Troop 5 - Madison Detachment	347 Kenmore Drive, 2A	Danville	Unknown								X
State Police	West Virginia State Police Troop 5 - Mason County Detachment	11344 Ohio River Road	West Columbia	Unknown								X
State Police	West Virginia State Police Troop 5 - Wayne Detachment	1302 Norfolk Avenue	Wayne	Unknown				X				X
State Police	West Virginia State Police Troop 5 - Williamson Detachment	200 East 3rd Avenue	Williamson	Unknown		X	Y					X
State Police	West Virginia State Police Troop 5 - Winfield Detachment	3389 Winfield Road, 10	Winfield	Unknown				X				X
State Police	West Virginia State Police Troop 6 - Headquarters	105 Pinecrest Drive	Beckley	Unknown								X
State Police	West Virginia State Police Troop 6 - Jesse Detachment	7712 Appalachian Highway	Jesse	Unknown				X				X
State Police	West Virginia State Police Troop 6 - Lewisburg Detachment	406 North Jefferson Street	Lewisburg	Unknown				X	X			X
State Police	West Virginia State Police Troop 6 - Oak Hill Detachment	1853 Main Street East	Oak Hill	Unknown				X				X
State Police	West Virginia State Police Troop 6 - Princeton Detachment	910 Oakvale Road	Princeton	Unknown				X				X
State Police	West Virginia State Police Troop 6 - Rainelle Detachment	354 John Raine Drive	Rainelle	Unknown								X
State Police	West Virginia State Police Troop 6 - Richwood Detachment	12 White Avenue	Richwood	Unknown		X						X
State Police	West Virginia State Police Troop 6 - Summersville Detachment	100 Service Road	Summersville	Unknown								X
State Police	West Virginia State Police Troop 6 - Union Detachment	176 West Virginia 3	Alderson	Unknown	X	X		X	X			X



Department/ Agency	Facility	Address	City	Owned vs. Leased	1% Flood	0.2% Flood	Levee Failure	Wildfire	Subsidence	Rad. Incidents	Landslide	Hazmat
State Police	West Virginia State Police Troop 6 - Welch Detachment	850 Virginia Avenue	Welch	Unknown								X
State Police	West Virginia State Police Troop 6 - West Union Detachment	2 Lois Lane	Greenwood	Unknown				X				X
State Police	West Virginia State Police Troop 6 - Whitesville Detachment	11823 Coal River Road	Whitesville	Unknown	X	X						X
State Police	West Virginia University Institute Of Technology Campus Police	405 Fayette Pike	Montgomery	Unknown				X				X
State Police	WHEELING DETACHMENT	200 EOFF STREET	WHEELING	Owned				X				X
State Police	WV STATE POLICE-HEADQUARTERS BLDG	725 JEFFERSON ROAD	SOUTH CHARLESTON	Owned								X
State Police	WVSP INFORMATION SER	701 JEFFERSON ROAD	SOUTH CHARLESTON	Owned		X		X				X
Supreme Court of Appeals	BARBOUR FAMILY COURT	3 NORTH HIGH STREET	PHILIPPI	Owned				X				X
Supreme Court of Appeals	BARBOUR MAGISTRATE	37 Church Street	PHILIPPI	Owned	X	X		X				X
Supreme Court of Appeals	BERKELEY MAGISTRATE	380 W. SOUTH STREET	MARTINSBURG	Owned					X			X
Supreme Court of Appeals	BOONE FAMILY COURT	200 STATE STREET	MADISON	Owned								X
Supreme Court of Appeals	BOONE FAMILY COURT	206 COURT ST. RM 102	MADISON	Owned				X				X
Supreme Court of Appeals	BRAXTON MAGISTRATE	307 MAIN STREET	SUTTON	Owned				X				
Supreme Court of Appeals	BROOKE MAGISTRATE	632 MAIN STREET STE. 203	WELLSBURG	Unknown	X	X		X				X
Supreme Court of Appeals	CABELL COUNTY FAMILY	744 4TH AVENUE	HUNTINGTON	Leased			Y	X				X
Supreme Court of Appeals	CABELL FAMILY COURT	750 FIFTH AVENUE (COURTH	HUNTINGTON	Owned			Y					X
Supreme Court of Appeals	CALHOUN MAGISTRATE	363 Main Street	GRANTSVILLE	Owned								X
Supreme Court of Appeals	CLAY MAGISTRATE	200 MAIN STREET	CLAY	Owned				X	X			X
Supreme Court of Appeals	Disciplinary Counsel, Office of	4700 MACCORKLE AVE. SE	CHARLESTON	Leased				X				X
Supreme Court of Appeals	DODDRIDGE MAGISTRATE	118 E. COURT STREET	WEST UNION	Owned				X				X
Supreme Court of Appeals	FAYETTE FAMILY COURT	213 N. COURT STREET	FAYETTEVILLE	Owned				X				X
Supreme Court of Appeals	FAYETTE MAGISTRATE	100 CHURCH STREET	FAYETTEVILLE	Owned				X				X
Supreme Court of Appeals	FAYETTE MAGISTRATE S	706 3RD AVENUE	MONTGOMERY	Owned		X		X				X
Supreme Court of Appeals	GILMER MAGISTRATE	201 N. COURT STREET	GLENVILLE	Owned				X				X
Supreme Court of Appeals	GRANT MAGISTRATE	4 NORTH MAIN STREET	PETERSBURG	Owned			Y	X				X
Supreme Court of Appeals	GREENBRIER FAMILY CO	650 COURT STREET SOUTH	LEWISBURG	Owned				X	X			X
Supreme Court of Appeals	GREENBRIER MAGISTRAT	200 N COURT STREET	LEWISBURG	Owned				X	X			X
Supreme Court of Appeals	HAMPSHIRE FAMILY COU	50 SOUTH HIGH STREET	ROMNEY	Owned				X				X
Supreme Court of Appeals	HANCOCK MAGISTRATE	900 NORTH CHESTER STREET	NEW CUMBERLAND	Owned	X	X		X				X
Supreme Court of Appeals	HARDY MAGISTRATE	204 WASHINGTON ST.	MOOREFIELD	Owned			Y	X				X
Supreme Court of Appeals	HARRISON FAMILY COUR	301 W. MAIN STR RM 423	CLARKSBURG	Owned								X
Supreme Court of Appeals	HARRISON MAGISTRATE	306 WASHINGTON AVENUE	CLARKSBURG	Owned								X
Supreme Court of Appeals	JACKSON MAGISTRATE	111 Main Street W	RIPLEY	Owned				X				X
Supreme Court of Appeals	JEFFERSON FAMILY COU	110 N GEORGE ST 2ND FLOO	CHARLES TOWN	Unknown					X			X
Supreme Court of Appeals	JEFFERSON MAGISTRATE	110 North George Street	CHARLES TOWN	Owned					X			X
Supreme Court of Appeals	KANAWHA MAGISTRATE	111 COURT STREET	CHARLESTON	Owned		X						X
Supreme Court of Appeals	LEWIS COURT ANNEX	111 COURT STREET	WESTON	Leased				X				X



Department/ Agency	Facility	Address	City	Owned vs. Leased	1% Flood	0.2% Flood	Levee Failure	Wildfire	Subsidence	Rad. Incidents	Landslide	Hazmat
Supreme Court of Appeals	LEWIS FAMILY COURT	110 CENTER AVENUE	WESTON	Owned								X
Supreme Court of Appeals	LINCOLN MAGISTRATE	8000 COURT AVENUE	HAMLIN	Owned				X				X
Supreme Court of Appeals	LOGAN FAMILY COURT	420 MAIN STREET	LOGAN	Owned				X				X
Supreme Court of Appeals	LOGAN MAGISTRATE	300 STRATTON ST RM B-1	LOGAN	Owned				X				X
Supreme Court of Appeals	MARION FAMILY COURT	219 ADAMS STREET	FAIRMONT	Owned								X
Supreme Court of Appeals	MARION MAGISTRATE	200 JACKSON STREET	FAIRMONT	Owned								X
Supreme Court of Appeals	MARSHALL FAMILY COUR	600 7TH STREET	MOUNDSVILLE	Owned								X
Supreme Court of Appeals	MARSHALL MAGISTRATE	511 SIXTH STREET	MOUNDSVILLE	Owned				X				X
Supreme Court of Appeals	MASON FAMILY COURT	200 6TH STREET	POINT PLEASANT	Owned			Y					X
Supreme Court of Appeals	MCDOWELL FAMILY COUR	105 WYOMING STREET	WELCH	Owned								X
Supreme Court of Appeals	MERCER FAMILY COURT	120 SCOTT STREET	PRINCETON	Owned				X				X
Supreme Court of Appeals	MERCER MAGISTRATE SA	100 ROGERS STREET	BLUEFIELD	Owned				X	X			X
Supreme Court of Appeals	MINERAL FAMILY COURT	107 WEST STREET	KEYSER	Leased				X				X
Supreme Court of Appeals	MINGO FAMILY COURT	75 E. 2ND ST., RM 327	WILLIAMSON	Owned		X	Y	X				X
Supreme Court of Appeals	MINGO MAGISTRATE	1st Ave Memorial	WILLIAMSON	Owned		X	Y	X				X
Supreme Court of Appeals	MONONGALIA MAGISTRAT	75 HIGH STREET	MORGANTOWN	Owned								X
Supreme Court of Appeals	MONROE MAGISTRATE	500 MAIN STREET	UNION	Owned				X	X			X
Supreme Court of Appeals	MORGAN MAGISTRATE	111 FAIRFAX STREET	BERKELEY SPRINGS	Owned				X				X
Supreme Court of Appeals	NICHOLAS MAGISTRATE	511 CHURCH STREET	SUMMERSVILLE	Owned				X				X
Supreme Court of Appeals	OHIO FAMILY COURT	51 SIXTEENTH ST 2ND FL	WHEELING	Owned				X				X
Supreme Court of Appeals	OHIO MAGISTRATE	26 FIFTEENTH STREET	WHEELING	Owned				X				X
Supreme Court of Appeals	PENDLETON MAGISTRATE	100 S Main Street	FRANKLIN	Owned								X
Supreme Court of Appeals	PERSONNEL OFFICE	2006 QUARRIER ST.	CHARLESTON	Leased		X						X
Supreme Court of Appeals	PLEASANTS MAGISTRATE	301 COURT LANE	ST. MARYS	Owned				X				X
Supreme Court of Appeals	POCAHONTAS FAMILY CO	818C TENTH STREET	MARLINGTON	Owned				X				X
Supreme Court of Appeals	POCAHONTAS MAGISTRAT	900 TENTH AVENUE	MARLINTON	Owned	X	X		X				X
Supreme Court of Appeals	PRESTON FAMILY COURT	106 W MAIN ST 2ND FL	KINGWOOD	Owned				X				X
Supreme Court of Appeals	PRESTON MAGISTRATE	101 W. MAIN (COURTHOUSE)	KINGWOOD	Owned				X				X
Supreme Court of Appeals	PUTNAM MAGISTRATE	3389 WINFIELD RD	WINFIELD	Owned				X				X
Supreme Court of Appeals	RALEIGH MAGISTRATE	222 MAIN STREET	BECKLEY	Owned								X
Supreme Court of Appeals	RANDOLPH FAMILY COUR	7 RANDOLPH AVENUE	ELKINS	Owned			Y	X				X
Supreme Court of Appeals	RANDOLPH MAGISTRATE	11 RANDOLPH AVENUE	ELKINS	Owned			Y	X				X
Supreme Court of Appeals	RITCHIE FAMILY COURT	101 WEST MAIN STREET	HARRISVILLE	Leased				X				X
Supreme Court of Appeals	RITCHIE MAGISTRATE	319 E. MAIN ST.	HARRISVILLE	Owned				X				X
Supreme Court of Appeals	ROANE MAGISTRATE	201 MAIN STREET	SPENCER	Owned				X				X
Supreme Court of Appeals	SUMMERS MAGISTRATE	123 TEMPLE STREET	HINTON	Owned				X				X
Supreme Court of Appeals	TAYLOR MAGISTRATE	214 W MAIN STREET	GRAFTON	Owned								X
Supreme Court of Appeals	TUCKER COURT ANNEX	211 FIRST STREET	PARSONS	Leased	X	X						X
Supreme Court of Appeals	TYLER MAGISTRATE	225 MAIN STREET	MIDDLEBOURNE	Owned				X				X



Department/ Agency	Facility	Address	City	Owned vs. Leased	1% Flood	0.2% Flood	Levee Failure	Wildfire	Subsidence	Rad. Incidents	Landslide	Hazmat
Supreme Court of Appeals	UPSHUR MAGISTRATE	38 W. MAIN STREET RM 204	BUCKHANNON	Owned		X		X				X
Supreme Court of Appeals	VENABLE/WAREHOUSES	3708 VENABLE AVENUE	CHARLESTON	Leased				X				X
Supreme Court of Appeals	WAYNE MAGISTRATE	700 Hendricks Street	WAYNE	Owned								X
Supreme Court of Appeals	WEBSTER MAGISTRATE	112 BELL STREET	WEBSTER SPRINGS	Owned	X	X		X				X
Supreme Court of Appeals	WETZEL FAMILY COURT	200 WASH/MAIN STREET	NEW MARTINSVILLE	Owned	X	X		X				X
Supreme Court of Appeals	WETZEL MAGISTRATE	303 MAIN STREET	NEW MARTINSVILLE	Owned	X	X		X				X
Supreme Court of Appeals	WIRT MAGISTRATE	PO Box 249	ELIZABETH	Owned	X	X		X				
Supreme Court of Appeals	WOOD FAMILY COURT	315 MARKET STREET	PARKERSBURG	Owned			Y	X				X
Supreme Court of Appeals	WOOD MAGISTRATE	208 AVERY STREET	PARKERSBURG	Owned			Y					X
Supreme Court of Appeals	WYOMING MAGISTRATE	24 Main Ave	PINEVILLE	Owned				X				X
Tax Appeals	TAX APPEALS OFFICE	1012 KANAWHA BLVD E	CHARLESTON	Leased		X						X
Tax Department	CLARKSBURG REGIONAL	200 WEST MAIN STREET	CLARKSBURG	Owned				X				X
Tax Department	MARTINSBURG REGIONAL	397 MID ATLANTIC PARKWAY	MARTINSBURG	Owned					X			X
Tax Department	PARKERSBURG REGIONAL	400 5th Street	PARKERSBURG	Owned								X
Tax Department	REVENUE CENTER	1001 LEE STREET	CHARLESTON	Owned		X		X				X
Tax Department	WAREHOUSE	1315 HANSFORD ST.	CHARLESTON	Owned		X						X
Tax Department	WHEELING REGIONAL	14TH & MARKET STREET	WHEELING	Owned		X						X
Transportation	Eastern West Virginia Regional Airport - Shepherd Field - MRB	170 Aviation Way	MARTINSBURG	Unknown								
Transportation	Green Landings Airport	179 Take Off Drive	Hedgesville	Unknown				X	X			X
Transportation	Philippi/Barbour County Regional Airport	309 South Main Street	Philippi	Unknown				X				X
Treasurer	ADMINISTATION	322 70TH ST	CHARLESTON	Owned		X						X
Treasurer	MORGANTOWN DATA CENT	837 CHESTNUT RIDGE RD	MORGANTOWN	Leased				X				X
Treasurer	MORGANTOWNFIELD OFFICE	258 HIGH STREET	MORGANTOWN	Owned								X
Treasurer	WAREHOUSE	7300 MACCORKLE AVENUE SE	CHARLESTON	Owned								X
University Physicians and Surgeons	CAPITOL NEUROLOGY	401 DIVISION ST #304	SOUTH CHARLESTON	Owned		X						X
University Physicians and Surgeons	HARVEY PRACTICE	35 CHASE DRIVE	HURRICANE	Leased				X				X
University Physicians and Surgeons	MARSHALL FAMILY MED	4600 RTE 152	LAVALETTE	Leased	X	X						X
University Physicians and Surgeons	MARSHALL HLTH TEAYS	300 CORPORATE CENTER DRI	SCOTT DEPOT	Owned				X				X
University Physicians and Surgeons	MARSHALL SURGERY	6007 US RT 60 EAST #203	BARBOURSVILLE	Leased								X
University Physicians and Surgeons	MARSHALL SURG-LOGAN	77 HOSPITAL DRIVE	LOGAN	Leased								X
University Physicians and Surgeons	MH TEAYS VALLEY II	100 CORPORATE CENTER DR	SCOTT DEPOT	Owned				X				X
University Physicians and Surgeons	MU EYE/CHARLESTON	331 LAIDLEY ST STE 201	CHARLESTON	Leased		X						X
University Physicians and Surgeons	PETERSON PRACTICE	3952 TEAYS VALLEY ROAD	HURRICANE	Leased				X				X



Department/ Agency	Facility	Address	City	Owned vs. Leased	1% Flood	0.2% Flood	Levee Failure	Wildfire	Subsidence	Rad. Incidents	Landslide	Hazmat
University Physicians and Surgeons	PROJECT HOPE	1012 7TH AVE	HUNTINGTON	Owned								X
University Physicians and Surgeons	university	1600 MEDICAL CENTER DRIVE	HUNTINGTON	Leased				X				X
University Physicians and Surgeons	VILLAGE MEDICAL CENT	659 CENTRAL AVE	BARBOURSVILLE	Owned				X				X
Unknown	Administrative Services Division	217 GUS R. DOUGLASS LANE BLDG. 2	CHARLESTON	Unknown				X				X
Unknown	Animal Health Division	331 GUS. R DOUGLASS LANE BLDG. 12	CHARLESTON	Unknown				X				X
Unknown	ATTORNEY GENERAL	1900 KANAWHA BLVD EAST, BLDG 1	CHARLESTON	Unknown								X
Unknown	Central Regional Jail	1255 DYER HILL ROAD	SUTTON	Unknown				X				X
Unknown	CLAIMS AND COLLECTIONS	110 NORTH MAIN STREET	WEBSTER SPRINGS	Unknown				X	X			X
Unknown	Credit Union, The State	2200 WASHINGTON STREET, EAST	CHARLESTON	Unknown		X		X				X
Unknown	DAQ Guthrie Laboratory	367 GUS R. DOUGLASS LANE	CHARLESTON	Unknown				X				X
Unknown	DAQ Northern Panhandle Regional Office (NPRO)	131A PENINSULA STREET	WHEELING	Unknown		X						X
Unknown	DEPARTMENT OF ARTS, CULTURE AND HISTORY	1901 KANAWHA BLVD EAST, BLDG 9	CHARLESTON	Unknown		X						X
Unknown	DISTRICT 4 DNR OFFICE	ROBERT C BYRD DRIVE	BECKLEY	Unknown								X
Unknown	DIVISION OF LABOR	1900 KANAWHA BLVD EAST, BLDG 3	CHARLESTON	Unknown		X						X
Unknown	DIVISION OF REHAB SERVICES	1900 KANAWHA BLVD EAST	CHARLESTON	Unknown								X
Unknown	Donel C. Kinnard Memorial State Veterans Cemetery	130 ACADEMY DRIVE	DUNBAR	Unknown				X				X
Unknown	ELKINS REGIONAL OFFICE	1029 NORTH RANDOLPH AVENUE	ELKINS	Unknown				X				X
Unknown	FAIRMONT TEST CENTER	420 MARION SQUARE	FAIRMONT	Unknown				X				X
Unknown	HHD 151st MP BN	62 John O Fame Drive	Gassaway	Unknown				X				X
Unknown	Hollywood Casino at Charles Town Races	750 HOLLYWOOD DRIVE	CHARLESTON	Unknown					X			X
Unknown	Housing Development Fund	5710 MACCORKLE AVE SE	CHARLESTON	Unknown		X						X
Unknown	Huttonsville Correctional Center and Jail	109 HCC BLVD	HUTTONSVILLE	Unknown								X
Unknown	J.M. ""Chick"" Buckbee Juvenile Center	144 JERRY LANE	AUGUSTA	Unknown				X				X
Unknown	JACKIE WITHROW HOSPITAL	105 SOUTH EISENHOWER DRIVE	BECKLEY	Unknown				X				X
Unknown	JOB INVESTMENT TRUST	1012 KANAWHA BLVD E #5	CHARLESTON	Unknown		X						X
Unknown	Keyser Regional Office	196 NORTH TORNADO WAY	Keyser	Unknown				X				X
Unknown	Lewisburg Regional Office	148 MAPLEWOOD AVENUE	LEWISBURG	Unknown				X	X			X
Unknown	Mardi Gras Casino & Resort	1 GREYHOUND DRIVE	CROSS LANES	Unknown								X
Unknown	Martinsburg Correctional Center and Jail	38 GRAPEVINE ROAD	MARTINSBURG	Unknown								X
Unknown	Martinsburg Regional Office	38 SEVERNA PARKWAY	MARTINSBURG	Unknown				X	X			X
Unknown	Mildred Mitchell-Bateman Hospital	1530 NORWAY AVE	HUNTINGTON	Unknown				X				
Unknown	Mountaineer Casino Racetrack & Resort	1420 MOUNTAINEER CIRCLE	NEW CUMBERLAND	Unknown								X
Unknown	North Region, Office of	22 HERBERT AVENUE	SMITHBURG	Unknown				X				X
Unknown	OFFICE OF TEACHING AND LEARNING	1900 KANAWHA BLVD EAST, BLDG 6	CHARLESTON	Unknown		X						X
Unknown	OFFICE OF TECHNOLOGY	1900 KANAWHA BLVD EAST, BLDG 5	CHARLESTON	Unknown		X						X
Unknown	OSR Philippi Field Office	47 SCHOOL STREET	PHILIPPI	Unknown	X	X		X				X



Department/ Agency	Facility	Address	City	Owned vs. Leased	1% Flood	0.2% Flood	Levee Failure	Wildfire	Subsidence	Rad. Incidents	Landslide	Hazmat
Unknown	Point Pleasant Regional Office	1408 KANAWHA STREET	POINT PLEASANT	Unknown			Y					X
Unknown	Potomac Highlands Regional Jail	355 DOLAN DRIVE	AUGUSTA	Unknown				X				X
Unknown	Region 1 WorkForce Development Board	200 NEW RIVER TOWN CENTER	BECKLEY	Unknown								X
Unknown	Region 4 WorkForce Development Board	531 MARKET STREET	PARKERSBURG	Unknown			Y					X
Unknown	Region 6 Liason Tri-State Fire Academy	4200 Ohio River Road	Huntington	Unknown	X	X		X				X
Unknown	Region 6 WorkForce Development Board	17 MIDDLETOWN ROAD	WHITE HALL	Unknown								X
Unknown	SOUTHWESTERN REG JAI	1300 GASTON CAPERTON DRIVE	HOLDEN	Unknown								X
Unknown	Spencer Office	203 THIRD AVENUE	WILLIAMSON	Unknown		X	Y	X				X
Unknown	Stephens Correctional Facility	795 VIRGINIA AVE	WELCH	Unknown								X
Unknown	The Greenbrier	300 W MAIN STREET	WHITE SULPHER SPRINGS	Unknown				X				X
Unknown	U.S.-W.Va. Agricultural Statistics Field Office	347 GUS. R DOUGLASS LANE BLDG. 13	CHARLESTON	Unknown				X				X
Unknown	Veterans Assistance, Department of	400 AIRPORT ROAD	ELKINS	Unknown				X				X
Unknown	Veterans Assistance, Department of	225 NORTH MAIN STREET	MOOREFIELD	Unknown			Y	X				X
Unknown	Water and Waste Management (DWWM), Division of	601 7TH STREET SE	CHARLESTON	Unknown		X		X				X
Unknown	Welch Facility (McDowell County Correctional Center)	50 COURT STREET	WELCH	Unknown				X				X
Unknown	West Virginia Veterans Nursing Facility	1 Freedom Way	CLARKSBURG	Unknown								X
Unknown	Westover Regional Office - Region 1	14 COMMERCE DRIVE	WESTOVER	Unknown								X
Unknown	WHEELING ISLAND HOTEL	1 SOUTH STONE STREET	WHEELING	Unknown	X	X		X				X
Unknown	Wildlife Resources	324 4TH AVENUE	SOUTH CHARLESTON	Unknown		X						X
Unknown	Williamson Regional Office	225 E. 3RD AVE	WILLIAMSON	Unknown		X	Y	X				X
Unknown	WINFIELD REGIONAL OFFICE	116 LIBERTY SQUARE	HURRICANE	Unknown								X
Unknown	WORKFORCE DEVELOPMENT BOARD	1245 WARWOOD AVE	WHEELING	Unknown				X				X
Unknown	WV Emergency Management Division	2403 Fairlawn Ave	Dunbar	Unknown				X				X
Veterans Assistance	ADMINISTRATIVE OFF.-West Virginia Veterans Home	512 WATER STREET	BARBOURSVILLE	Owned								X
Veterans Assistance	CHARLESTON OFFICE	300 TECHNOLOGY DRIVE	SOUTH CHARLESTON	Owned								X
Veterans Assistance	CLARKSBURG OFFICE	427 WEST PIKE STREET	CLARKSBURG	Owned				X				X
Veterans Assistance	ELKINS OFFICE	1023 N Randolph Ave	ELKINS	Owned				X				X
Veterans Assistance	FIELD AND CLAIMS OFFICES	109 RANDOLPH STREET	BECKLEY	Owned								X
Veterans Assistance	HUNTINGTON CLAIM OFF	640 4TH AVE	HUNTINTON	Leased			Y					X
Veterans Assistance	LEWISBURG OFFICE	30 RED OAKS SHOP CTR #2	RONCEVERTE	Owned					X			X
Veterans Assistance	LOGAN OFFICE	120 NICK SAVAS DR	LOGAN	Leased				X				X
Veterans Assistance	MARTINSBURG OFFICE	115 AIKENS CTR	MARTINSBURG	Owned					X			X
Veterans Assistance	MOOREFIELD OFFICE	225 N. MAIN ST.	MOOREFIELD	Owned			Y	X				X
Veterans Assistance	PRINCETON OFFICE	1500 W. MAIN STREET	PRINCETON	Owned				X				X
Veterans Assistance	SPENCER OFFICE	216 MARKET ST. SUITE 301	SPENCER	Owned				X				X
Veterans Assistance	SUMMERSVILLE OFFICE	848 NORTHSIDE DRIVE	SUMMERSVILLE	Owned								X
Veterans Assistance	TEAYS VALLEY OFFICE	3772 TEAYS VALLEY RD	HURRICANE	Leased				X				X



Department/ Agency	Facility	Address	City	Owned vs. Leased	1% Flood	0.2% Flood	Levee Failure	Wildfire	Subsidence	Rad. Incidents	Landslide	Hazmat
Veterans Assistance	WHEELING OFFICE	1082 EAST BETHLEHEM BOUL	WHEELING	Owned				X				X
Veterans Assistance	WV VET NURSING FACIL	1 FREEDOMS WAY	CLARKSBURG	Owned								X
Water Development Authority	WATER DEVELOPMENT AUTH	1009 BULLITT ST.	CHARLESTON	Owned		X						X
West Liberty University	597 VAN METER WAY	208 UNIVERSITY DRIVE	WEST LIBERTY	Owned								X
West Liberty University	TOPPER TOWERS	1120-1126 NORTH FORK RD	WHEELING	Owned	X	X		X				X
West Liberty University	WEST LIBERTY HIGHLAN	355 WHARTON CIRCLE	TRIADELPHIA	Owned								X
Workforce WV	BECKLEY FIELD OFFICE	200 VALLEY CITY CENTER	BECKLEY	Owned								
Workforce WV	ELKINS FIELD OFFICE	1023 NORTH RANDOLPH AVE.	ELKINS	Owned				X				X
Workforce WV	GREENBRIER VALLEY FI	20 RED OAKS SHOPPING CNT	RONCEVERTE	Owned					X			X
Workforce WV	HUNTINGTON FIELD OFF	2699 PARK AVENUE	HUNTINGTON	Owned			Y					X
Workforce WV	LOGAN FIELD OFFICE	130 STRATTON STREET	LOGAN	Unknown								X
Workforce WV	MARTINSBURG FIELD OF	222 VIKING WAY	MARTINSBURG	Owned					X			X
Workforce WV	MORGANTOWN FIELD OFF	304 SCOTT AVENUE	MORGANTOWN	Leased				X				X
Workforce WV	PARKERSBURG FIELD OF	36TH STREET	PARKERSBURG	Owned	X	X						X
Workforce WV	PRINCETON FIELD OFFI	195 DAVIS STREET	PRINCETON	Owned		X						X
Workforce WV	WELCH FIELD OFFICE	110 PARK AVENUE	WELCH	Owned	X	X		X				X
Workforce WV	WORKFORCE MOOREFIELD FIELD OFF	151 ROBERT C. BYRD INDUSTRIAL PARK ROAD	MOOREFIELD	Owned								X
WV Prosecuting Attorneys Institute	FINANCE OFFICE	1124 SMITH ST	CHARLESTON	Leased		X						X
WVU	UNIVERSITY	1550 UNIVERSITY AVE	MORGANTOWN	Leased								X
WVU at Parkersburg	MAIN BUILDING	300 CAMPUS DRIVE	PARKERSBURG	Owned				X				X



West Virginia State Hazard Mitigation Plan

2023 Goals and Objectives

Goal 1: Reduce or eliminate the impact of hazards on infrastructure throughout the State.

- Objective 1.1 Remove the exemption of State facilities from compliance with any development regulations by 2027.
- Objective 1.2 Ensure that State facilities comply with the State Building Code and other development regulations by the end of 2032.
- Objective 1.3 Ensure that State operations are conducted at facilities that are located outside of hazard areas, particularly areas prone to flooding.
- Objective 1.4 Implement strategic, proactive projects to protect existing State facilities from hazard impacts.
- Objective 1.5 Protect high hazard potential dams and reduce vulnerability to dam failures downstream through rehabilitation and awareness activities.

Goal 2: Align and integrate programs related to reducing long-term vulnerability to hazards.

- Objective 2.1 Analyze and identify opportunities for increased coordination of State programs.
- Objective 2.2 Align and integrate multiple State agencies'/departments' programs related to reducing vulnerability to dam failure.
- Objective 2.3 Align and integrate multiple State agencies'/departments' programs related to resilience from flooding.
- Objective 2.4 Align and integrate programs related to preparing for, responding to, recovering from, and mitigating the impacts of hazards within individual agencies/departments.
- Objective 2.5 Integrate further the regional planning and development councils in the State's mitigation program.



Goal 3: Provide consistent, continual education of the whole community on reducing long-term vulnerability throughout the State of West Virginia.

- Objective 3.1 Educate State and local officials, stakeholder groups, and the general public on hazards and reducing long-term vulnerability.
- Objective 3.2 Require continuing education of local officials with a role in regulating development and include topics on reducing long-term vulnerability in those requirements.
- Objective 3.3 Require continuing education of elected executive officials and include topics on reducing long-term vulnerability in those requirements.

Goal 4: Enhance and support mitigation programs and activities at the local (regional and county) level to reduce long-term vulnerability.

- Objective 4.1 Enact changes to existing State funding mechanisms to facilitate their use in reducing long-term vulnerability to hazards.
- Objective 4.2 Develop a State-level program to fund mitigation activities at the local level.
- Objective 4.3 Develop State-level standards for the contents of regional and county hazard mitigation plans.
- Objective 4.4 Provide technical assistance to regions, counties, and municipalities in developing their hazard mitigation programs and implementing projects.
- Objective 4.5 Develop, enhance, and advertise data that is available to support mitigation planning and implementation at the local level.
- Objective 4.6 Work with local stakeholders to protect structures and infrastructure from hazard impacts.



ACTION WORKSHEET

Name: _____

Email: _____

Action Worksheet	
Action/Solution:	
What problem does this action address?	
Hazard(s) of Concern:	
Benefits: (What losses will be avoided? What capabilities will be built?)	
Goals/Objectives:	
Action Type: (LPR, EAP, SIP, NSP)	
Lead Organization/Official:	
Supporting Organizations/Officials:	
How long will it take to complete once it is started?	
When can it start?	
Estimated Cost:	
Potential Funding Sources:	
Any other information?	

Please return this worksheet at the end of the meeting.



West Virginia State Hazard Mitigation Plan

Federal Funding Programs

Program	Agency	Description
Hazard Mitigation Grant Program (HMGP)	FEMA	To significantly reduce or permanently eliminate future risk to lives and property from natural hazards. HMGP funds projects in accordance with priorities identified in state and local hazard mitigation plans and enables mitigation measures to be implemented during the recovery from a disaster.
Flood Mitigation Assistance (FMA)	FEMA	To implement cost-effective measures that reduce or eliminate the long-term risk of flood damage to buildings and other structures insured under the National Flood Insurance Program (NFIP).
Building Resilient Infrastructure and Communities (BRIC)	FEMA	Funding is aimed towards capability and capacity building, encouraging innovation, promoting partnership, enabling larger projects, maintain flexibility and providing consistency. The goal of the grant is to reduce overall risk from upcoming hazard events and to promote future self-reliance at state and local levels.
High Hazard Potential Dam (HHPD) Grant Program	FEMA	Funding is for states or territories with a dam classified as a high hazard dam. These grants provide technical, planning and construction assistance for rehabilitation of eligible dams.
Post-Disaster Economic Recovery Grants and Assistance	EDA	Grant funding to assist with the long-term economic recovery of communities, industries, and firms adversely impacted by disasters. Several programs are available.
American Rescue Plan	EDA	Funding to assist communities nationwide in their efforts to build back better by accelerating the economic recovery from the coronavirus pandemic and building local economies that will be resilient to future economic shocks. Grant programs include: <ul style="list-style-type: none"> • Build Back Better Regional Challenge • Good Jobs Challenge • Economic Adjustment Assistance Program • Indigenous Communities Program • Travel, Tourism, and Outdoor Recreation Program • Statewide Planning, Research, and Networks



Program	Agency	Description
U.S. Small Business Administration Loan Programs	Small Business Administration (SBA)	Provides low-interest disaster loans to be used to repair or replace the following items damaged or destroyed in a declared disaster: real estate, personal property, economic injury, machinery and equipment, and inventory and business assets.
Public Assistance Grants	FEMA	Grants for the repair, replacement, or restoration of disaster-damaged, publicly owned facilities and the facilities of certain private nonprofit organizations. Mitigation funding is available for work related to damaged components of eligible buildings/structures.
Community Development Block Grants Program	HUD	<p>Provides annual grants on a formula basis to develop viable urban communities by providing decent housing and a suitable living environment, and by expanding economic opportunities, principally for low- and moderate-income persons. CDBG funds may be used for activities which include, but are not limited to:</p> <ul style="list-style-type: none"> • Acquisition of real property • Relocation and demolition • Rehabilitation of residential and non-residential structures • Construction of public facilities and improvements, such as water and sewer facilities, streets, neighborhood centers, and the conversion of school buildings for eligible purposes • Public services, within certain limits • Activities relating to energy conservation and renewable energy resources • Provision of assistance to profit-motivated businesses to carry out economic development and job creation/retention activities
HOME Investment Partnerships Program	HUD	Provides formula grants to states and localities that communities use - often in partnership with local nonprofit groups - to fund a wide range of activities including building, buying, and/or rehabilitating affordable housing for rent or homeownership or providing direct rental assistance to low-income people. The program's flexibility allows states and local governments to use HOME funds for grants, direct loans, loan guarantees or other forms of credit enhancements, or rental assistance or security deposits.



Program	Agency	Description
Capital Fund Emergency/Natural Disaster Funding	HUD	Funding to public housing agencies that confront an emergency situation or a natural disaster.
Single Family Housing Repair Loans and Grants (Section 504 Rural Housing Loans and Grants)	USDA	Repair loans, grants, and technical assistance for very low-income homeowners living in rural areas to repair their homes and remove health and safety hazards.
Single Family Housing Guaranteed Loans (Section 502 Rural Housing Loans)	USDA	Also known as the Section 502 Direct Loan Program, this program assists low- and very-low-income applicants obtain decent, safe and sanitary housing in eligible rural areas by providing payment assistance to increase an applicant's repayment ability.
Emergency Management Performance Grant (EMPG)	FEMA	Grants are available to State, local, territorial, and tribal governments in preparing for all hazards. The Federal Government, through the EMPG Program, provides necessary direction, coordination and guidance, and provides necessary assistance, as authorized so that a comprehensive emergency preparedness system exists at all levels for all hazards.
Homeland Security Grant Program (HSGP)	FEMA	Supports the building, sustainment, and delivery of core capabilities essential to achieving the National Preparedness Goal of a secure and resilient nation. HSGP is composed of three interconnected grant programs including the State Homeland Security Program (SHSP), Urban Areas Security Initiative (UASI), and the Operation Stonegarden (OPSG). Together, these grant programs fund a range of preparedness activities, including planning, organization, equipment purchase, training, exercises, and management and administration.
Cooperating Technical Partners (CTP)	FEMA	The CTP Program is an innovative approach to creating partnerships between the Federal Emergency Management Agency (FEMA) and participating NFIP communities, regional agencies, state agencies, tribes and universities that have the interest and capability to become more active participants in the FEMA flood hazard mapping program.



Program	Agency	Description
National Dam Safety Program (NDSF) State Assistance Grant Program	FEMA	<p>The NDSP is a partnership of the states, federal agencies, and other stakeholders to encourage individual and community responsibility for dam safety. Grant assistance to the States provides vital support for the improvement of the State dam safety programs that regulate most of the dams in the United States. The states use NDSP funds for the following types of activities:</p> <ul style="list-style-type: none"> • Dam safety training for state personnel • Increase in the number of dam inspections • Increase in the submittal and testing of Emergency Action Plans • More timely review and issuance of permits • Improved coordination with state emergency preparedness officials • Identification of dams to be repaired or removed • Conduct dam safety awareness workshops and creation of dam safety videos and other outreach materials
Cooperative Forestry State Fire Assistance	U. S. Forest Service	<p>The Cooperative Forestry program manages a number of programs including The Forest Stewardship Program, The Forest Legacy Program, The Community Forest Program, The Urban and Community Forestry Program, Ecosystem Services and Markets, and Wood Innovations</p>
Small Civil Works Projects; Continuing Authorities Program (CAP)	USACE	<p>Supports efforts for planning, designing, and constructing certain types of water resource and environmental restoration projects without specific Congressional authorization. The purpose of the CAP is to plan and implement projects of limited size, cost, scope, and complexity. The table below lists the CAP authorities and their project purposes.</p>
Nonstructural Alternatives to Structural Rehabilitation of Damaged Flood Control Works	USACE	<p>Direct planning and construction grants for nonstructural alternatives to the structural rehabilitation of flood control works damaged in floods or coastal storms.</p>
Transportation Trust Fund	FHA	<p>Transportation Trust Fund funds grants through a competitive application-based process administered by the Local Aid District Offices. County Aid Program- Administer the County Aid Program for road and bridge infrastructure improvements under county jurisdiction. Each County receives an annual formula-</p>



Program	Agency	Description
		based allotment that takes into consideration county road lane mileage and population. The County Aid Program is funded through the Transportation Trust Fund and provides funding for eligible costs of projects included in the county’s approved Annual Transportation Program.
Forest Legacy Program	U.S. Forest Service	Federal program in partnership with states supports efforts to protect environmentally sensitive forest lands. Designed to encourage the protection of privately owned forest lands, Forest Legacy is an entirely voluntary program. To maximize the public benefits it achieves, the program focuses on the acquisition of partial interests in privately owned forest lands. Forest Legacy helps states develop and carry out their forest conservation plans. It encourages and supports acquisition of conservation easements, legally binding agreements transferring a negotiated set of property rights from one party to another, without removing the property from private ownership.
Rural Development Assistance—Housing	USDA	Grants, loans, and technical assistance for addressing rehabilitation and health and safety needs in primarily low-income rural areas. Declaration of major disaster necessary.
Rural Development Assistance—Utilities	USDA	Direct and guaranteed rural economic loans and business enterprise grants to address utility issues and development needs.
Land and Water Conservation Fund	NPS	Funding to states for outdoor recreational development, renovation, land acquisition, and planning. The program is divided into two distinct funding pots: state grants and federal acquisition funds.
Reimbursement for Firefighting on Federal Property	USFW	Provides reimbursement only for direct costs and losses over and above normal operating costs.
Fire Prevention and Safety Grant Program	FEMA	Grants for projects that enhance the safety of the public and firefighters from fire and related hazards. The primary goal is to target high-risk populations and mitigate high incidences of death and injury.
Assistance to Firefighters	FEMA	Grants to local fire departments to protect citizens and firefighters against the effects of fire and fire-related incidents.



Program	Agency	Description
Assistance—Community Facility Direct Loans/Grants	USDA	Grants, direct and guaranteed loans, and technical assistance to construct, enlarge, or improve community facilities for healthcare, public safety, and public services in primarily low-income rural areas.
Hazardous Materials Emergency Preparedness Program	USDOT	Project grants and technical assistance to enhance hazardous materials emergency planning and training
Infrastructure Protection Program	FEMA	Grants to strengthen the nation’s ability to protect critical infrastructure facilities and systems. Includes Transit Security Grant Program, Port Security Grant Program, Intercity Bus Security Grant Program, Trucking Security Program, and Buffer Zone Protection Program grant programs.
Farm Ownership Loans	USDA	Direct loans, guaranteed/insured loans, and technical assistance to farmers to develop, construct, improve, or repair farm homes, farms, and service buildings and to make other necessary improvements.

State Funding Programs

Funding Program	Description
Abandoned Mine Lands Economic Revitalization Program	The WVDEP Office of Abandoned Mine Lands and Reclamation administers funding for economic development projects on abandoned mine lands through the AMLER program.
Watershed Project Grants	WV’s NPS administers the §319 grants. The NPS Program emphasizes management strategies and programs to address nonpoint pollution problems. Before project grants can be approved a watershed-based plan (WBP) must be developed through local stakeholder involvement. Projects within a watershed must be designed to implement the plan.



Funding Program	Description
Rehabilitation Environmental Action Plan (REAP) Grants	<p>REAP focuses on cleanup efforts from both program staff and volunteers statewide. In a unique partnership, the program empowers citizens to take ownership of their communities by providing technical, financial, and resource assistance in cleanup efforts. REAP contains various grant opportunities.</p> <ul style="list-style-type: none"> • Recycling Assistance Grant Program: the funds are available to any county, municipality, the public or private entity in West Virginia that is interested in planning and implementing recycling programs, related public educational programs or need assistance in recycling market efforts. • Litter Control Grant Program: The Litter Control Grant is a matching fund that assists municipalities and county government agencies with community cleanup and litter enforcement projects. • Covered Electronic Devices Grant Program: Expenditures from the fund shall be for grants for recycling or other programs that divert covered electronic devices from the waste stream. • E-Cycling Contractors: Grantees should confirm that the contractors providing recycling services are making a good faith attempt to adhere to one of the two accredited certification standards for electronic recyclers - Responsible Recycling (R2) or Standard for Responsible Recycling and Reuse of Electronic Equipment (e-Stewards).
Transportation Alternatives Program	<p>Congress initiated several reimbursable grant programs, including TAP, designed to enhance America's "Livable Communities" through the Intermodal Surface Transportation Efficiency Act (ISTEA) and continued by the Transportation Equity Act for the 21st Century To be eligible, a project must: (1) have a relationship to surface transportation; and (2) must be one of the qualifying activities set by law.</p>
Recreational Trails Fund Program	<p>Congress initiated a number of reimbursable grant programs, including the RTP, designed to enhance America's "Livable Communities" through the Intermodal Surface Transportation Efficiency Act (ISTEA). West Virginia Transportation Alternatives and Recreational Trails Program (TARTP) grants help towns and cities build and improve sidewalks, lighting, trails, and more. The program is administered by the West Virginia Department of Transportation and funded by the Federal Highway Administration.</p>
Community Participation Grant Program	<p>The Governor's Community Partnership program provides state grant funds for community and economic development projects throughout West Virginia. In true community partnerships, the program enables communities to expand, build and improve a variety of public facilities and services.</p>



Funding Program	Description
Rural Health Infrastructure Loan Program	The Center for Rural Health Development, Inc. (Center), a West Virginia not-for-profit corporation, operates the West Virginia Rural Health Infrastructure Loan Fund (Loan Fund) for the purpose of making affordable and flexible loans available to West Virginia's health care providers. Its objective is to strengthen West Virginia's rural health infrastructure.
In Lieu Fee Program	The goal of West Virginia's ILF Program is to achieve no net loss of existing stream and wetland acreage and functions in West Virginia through effective restoration, enhancement, replacement, and preservation of aquatic resources. The program utilizes watershed and landscape-based planning to identify and assess potential mitigation opportunities that maximize the ecological benefits of aquatic resources within the same geographic service areas as the impacts.
Appalachian Regional Commission Federal Grant Program	Applicants must meet the federal financial management requirements outlined in 2 CFR 200. Construction projects must comply with federal regulations for environmental review and Davis-Bacon labor standards. ARC funds can match any other funding source, including federal, state and local funds. Highest priority for the West Virginia ARC program is infrastructure projects (water, sewer, broadband), particularly projects in ARC-designated distressed counties.
Weatherization Assistance Program	Weatherization has operated for more than 40 years and is the nation's largest single "whole-house" energy efficiency program. The Program's primary purpose, established by law, is "...to increase the energy efficiency of dwellings owned or occupied by low-income persons, reduce their total residential energy expenditures, and improve their health and safety, especially low-income persons who are particularly vulnerable, such as the elderly, the disabled, and children. This program is administered by WV DEC.
Land and Water Conservation Fund	LWCF provides matching grants to assist in the planning, acquisition, and development of state and local parks and is administered by WV DEC.
Chesapeake Bay Implementation Grant and Chesapeake Bay Regulatory/ Accountability	Project funds are available to implement projects that reduce nitrogen, phosphorous and sediment pollution in the area.



Funding Program	Description
Clean Water State Revolving Fund Assistance	The Clean Water State Revolving Fund program is a funding program to address water quality problems through wastewater facility construction, upgrades, or expansions. When a community has been recommended by the West Virginia Infrastructure and Jobs Development Council to seek the Clean Water State Revolving Fund program for financial assistance, that community will be contacted by one of the financial managers.



STATE OF WEST VIRGINIA 2023 HAZARD MITIGATION PLAN UPDATE
 State Planning Team Mitigation Strategy Meeting

SIGN-IN

February 9, 2023 | 9:30 a.m. – 2:00 p.m.

NAME/TITLE	AGENCY/ORGANIZATION	E-MAIL ADDRESS	TELEPHONE
David Armstrong	KCOEM	davidarmstrong@kanawha.us	304 533 7889
Tim Keaton	WVEMD	tim.w.keaton@wv.gov	304-414 7659
Jennifer Skaggs	WV Conservation Agency	jksaggs@wvca.us	304-941-3134
Scott Metzger	FEMA	JohnWilliam.Metzger@FEMA.DHS.gov	
Xavier Morgan	WVEMD	Xavier.M.M@wvca	
Joel Davis	MOVRC	Joel.Davis@movrc.org	
Bob Martin	SRO	robert.f.martin@wv.org	304 352 0725
Ed Martin	SRO	edwin.r.martin@wvca	
JoAnn Combs	USACE	Joann.D.Combs@usace.army.mil	304 399- 5817
Anthony Evans	WVDOF	h.tony.evans@wv.gov	





STATE OF WEST VIRGINIA 2023 HAZARD MITIGATION PLAN UPDATE
 State Planning Team Mitigation Strategy Meeting

SIGN-IN

February 9, 2023 | 9:30 a.m. – 2:00 p.m.

NAME/TITLE	AGENCY/ORGANIZATION	E-MAIL ADDRESS	TELEPHONE
Tom Hansen	FEMA	Thomas.hansenjr@fema.dhs.gov	267-896-1092
Stephanie Rosier	WV Office Emergency Management	Stephanie.a.Rosier@WV.GOV	
James Yong	FEMA	james.yong@fema.dhs.gov	202-914-0229
Tammy Sneed	WV EMD	tammy.m.sneed@wv.gov	304 957 2597
Amberlee Perkins	WV EMD	AmberleeMPerkins@wv.gov	304 957 2772
Jeremy Bandy	WV DEP	Jeremy.W.Bandy@wv.gov	304 767-1677
Aaron Tonkery	WV DEP	aroon.p.tonkery@wv.gov	304-612-5393
David Dove	WV DEP	david.w.dove@wv.gov	304 690-5905





STATE OF WEST VIRGINIA 2023 HAZARD MITIGATION PLAN UPDATE
 State Planning Team Mitigation Strategy Meeting

SIGN-IN

February 9, 2023 | 9:30 a.m. – 2:00 p.m.

NAME/TITLE	AGENCY/ORGANIZATION	E-MAIL ADDRESS	TELEPHONE
Elizabeth Karsow	FEMA R3 PM	Elizabeth.Karsow@fema.dhs.gov	215 347 0686
Ray Perry	Logan County	rperry@lccwv.us	304-687-9680
Gabe Reed	WVEMD	you have my email	
Jaleesa Tate / Deputy PM	Tetra Tech	jaleesa.tate@tetratech.com	302-283-2231
Tony Subbio / PM	Tetra Tech	tony.subbio@tetratech.com	717-839-5654

